

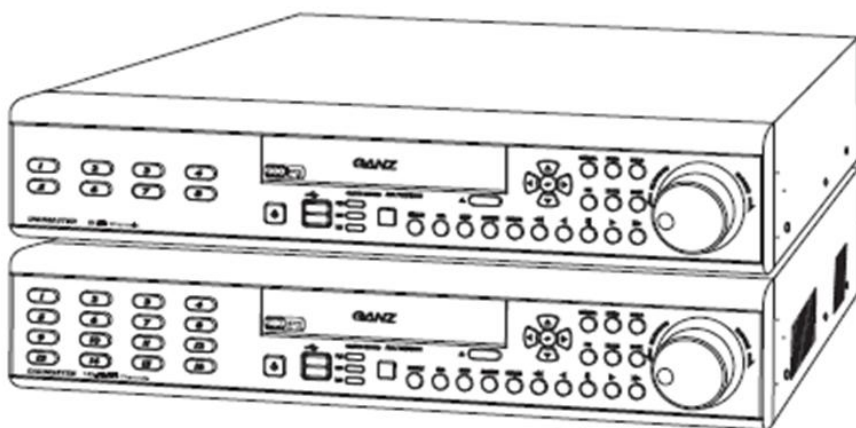
8CH/16CH DIGITAL VIDEO RECORDER

DIGIMASTER SERIES

DR8NRT / DR16NRT

INSTRUCTION MANUAL

Before connecting, operating or adjusting this product,
read this instruction booklet carefully and completely



Specification & Organization	5
Specifications	5
Product Contents List	7
System Organization	8
Product Description	9
Front panel description	9
Rear panel description	10
Remote Controller description	11
HDD, DVD-RW Connect	12
Power On	13
Live Display	14
Configuring the live display	14
PTZ	15
Search	16
Normal Search	16
Sequence Search	21
Thumbnail Search	22
Smart Search	23
Backup	24
Backup	24
Backup Data Management	25
Configuration-System	26
Camera	26
Alarm/Event	29
Display	35
Audio	38
User	39
Network	41
System	43
Storage	45

Configuration-Record	46
Record mode	46
Normal record	48
Intensive record	50
Panic record	52
Sequence	53
Digital Zoom	54
Keylock	55
Panic Start/Stop	56
Shutdown	57
Error Code List	57
RemoteSW installation	58
System Requirement	58
Introduce	59
RemoteSW Local Setup	60
local setup	62
RemoteSW Search	64
Search Function Introduce	64
Search Method	65
Search Option	66
RemoteSW DVR System Setup	71
Camera	72
Alarm/Event	73
Display	76
Audio	78
User	78
RemoteSW DVR Record Setup	79
Record Mode	80
Normal record	81
Intensive record	83
Panic record	84
Web Client Installation	85

IMPORTANT SAFETY INSTRUCTIONS

- 1) Read these instructions.
- 2) Keep these instructions.
- 3) Heed all warnings.
- 4) Follow all instructions.
- 5) Do not use this apparatus near water.
- 6) Clean only with a dry cloth.
- 7) Do not block any of the ventilation openings. Install in accordance with the manufacturer's instructions.
- 8) Do not install near any heat sources such as radiators, heat registers, stoves, or other apparatus that produce heat.
- 9) Do not defeat the safety purpose of the polarized or grounding type plug. A polarized plug has two blades with one wider than the other.
A grounding type plug has two blades and a third grounding prong.
The wide blade or the third prong is provided for your safety.
When the provided plug does not fit into your outlet, consult an electrician for replacement of the obsolete outlet.
- 10) Protect the power cord from being walked on or pinched particularly at plugs, convenience receptacles, and the point where they exit from the apparatus.
- 11) Only use the attachments/accessories specified by the manufacturer.
- 12) Use only with a cart, stand, tripod, bracket, or table specified by the manufacturer, or sold with the apparatus.
When a cart is used, use caution when moving the cart/apparatus combination to avoid injury from tip-over.
- 13) Unplug this apparatus during lightning storms or when unused for long periods of time.
- 14) Refer all servicing to qualified service personnel. Servicing is required when the apparatus has been damaged in any way, such as power supply cord or plug is damaged, liquid has been spilled or objects have fallen into the apparatus, the apparatus has been exposed to rain or moisture, does not operate normally, or has been dropped.
- 15) This equipment is indoor use and all the communication wirings are limited to inside of the building.
- 16) The socket-outlet shall be installed near the equipment and shall be easily accessible.
- 17) CAUTION
RISK OF EXPLOSION IF BATTERY IS REPLACED BY AN INCORRECT TYPE.
DISPOSE OF USED BATTERIES ACCORDING TO THE INSTRUCTIONS.
Operation Max temperature : 40°C
USB Load condition: USB Ports(5 Vdc, Max. 500 mA)

SPECIFICATION&ORGANIZATION

Specifications

MODEL		DR8NRT,DR16NRT
Operation	PENTAPLEX	PENTAPLEX performance (Simultaneous Live Display/Recording/Playback/Archiving/ Networking effectively without interfering each operations)
Video in	Channels	16/8
	Connection	BNC, 1.0Vpp composite 75ohm balanced
	Loop through	BNC,1.0Vpp composite 75ohm unbalanced, auto termination
Audio in	Channels	4
	Connection	line level unbalanced
Main Displays	BNC	1.0Vpp composite 75ohm unbalanced
	VGA	15 pin D-SUB 1024 x 768 @ 60Hz
	Screen display modes	1 , 4 , 9 , 16 User defined channels for each mode
	Sequence	Adjustable dwell time, user defined sequences
Spot displays	Channels	4 fully programmable
	Connection	BNC, 1.0Vpp composite 75ohm unbalanced
	Display mode	Full screen sequence, adjustable dwell time
Audio out	Channels	1
	Connection	RCA, line level unbalanced
External alarm	Inputs	16(16 Open collector TR), NO or NC common ground
	Outputs	16, high(+5V) or low(0V) selectable, common ground
User interface	On screen display	GUI, alpha blending
	Control	Front panel/IR Remote/USB Mouse
Recording	Video CODEC	MPEG-4
	Resolution options for each channel	CIF (352 x 240, 352 x 288), 2 CIF (704 x 240, 704 x 288), D1 (704 x 480, 704 x 576)
	Maximum total frame rate	480/240FPS(NTSC) / 400/200 FPS (PAL)
	Image quality	Highest, High, Standard, Low
	Pre-event recording	5 seconds max
	Recording modes	Continuous / Motion detection / Alarm / User event / Panic
	Frame rate options for each channel	30 – 15 – 7.5 – 4 – 2 – 1
	Schedule Configurable recording time limits	Weekly / Daily per Camera
Audio	Audio inputs independently assigned to each channel	
Motion detection	16 x 16 selectable grid with 10 levels of sensitivity	
Covert recording	Yes, selectable by channel	

	Camera title	English and Numeric
Playback	Speed	Forward / reverse. 1x, 2x, 3x, 4x, 8x, 16x, 32x, 64x, 128x
	Control	Front panel buttons and Jog / Shuttle /USB Mouse
	Search method	Calendar / timeline, event log, Sequence, Thumbnail, Smart Search
	Split screen display modes	1,4,16
	Audio synchronization	Yes at any frame rate
Archiving	Storage	DVD±RW, USB Memory stick, Network
	Format	Watermarked AVI
	Archive data	Independent channels selection (video / audio), backup log, event log
Time	Time zone	Worldwide, Selectable
	DST	Yes
PTZ	RS-485	Multi protocol, baud rate and speed control for each channel
System	Watchdog	Yes
	Abnormal shutdown detection	Yes, with system auto recovery
	HDD error detection	Yes, SMART monitoring
Network	Connection	RJ45, 10 / 100 Ethernet
	DHCP	Yes
	DDNS	Yes
	Two way network audio	Yes
	Bandwidth management	Yes
Remote client	Client software	Yes, Included
	Remote configuration	Yes
	Remote PTZ control	Yes
	Email event notification	Yes
Storage	Maximum Capacity	Not limited
	Storage	4 x HDD maximum
	Recording options	Write once / Overwrite
Event handling	Source	Alarm in, motion detection, video loss, HDD error, User event
	Action	Record, alarm out, email notification, log, remote client popup, buzzer, full screen popup
Security	User levels	ADMIN, MANAGER, USER
	Key Lock	Yes, password protected
Physical	Dimensions	428mm(w) x 475mm(d) x 93mm(h)
	Weight	12Kgs

SPECIFICATION&ORGANIZATION

Product Contents List

Please check if all the product contents are present after opening the package.

① Basic Contents



DR8NRT,16NRT Unit



AC Power Cable



Instruction Manual



Remote Controller



Remote Agent
Installation CD



AAA Battery x 2

② Optional Contents



Internal Hard Disk Drive



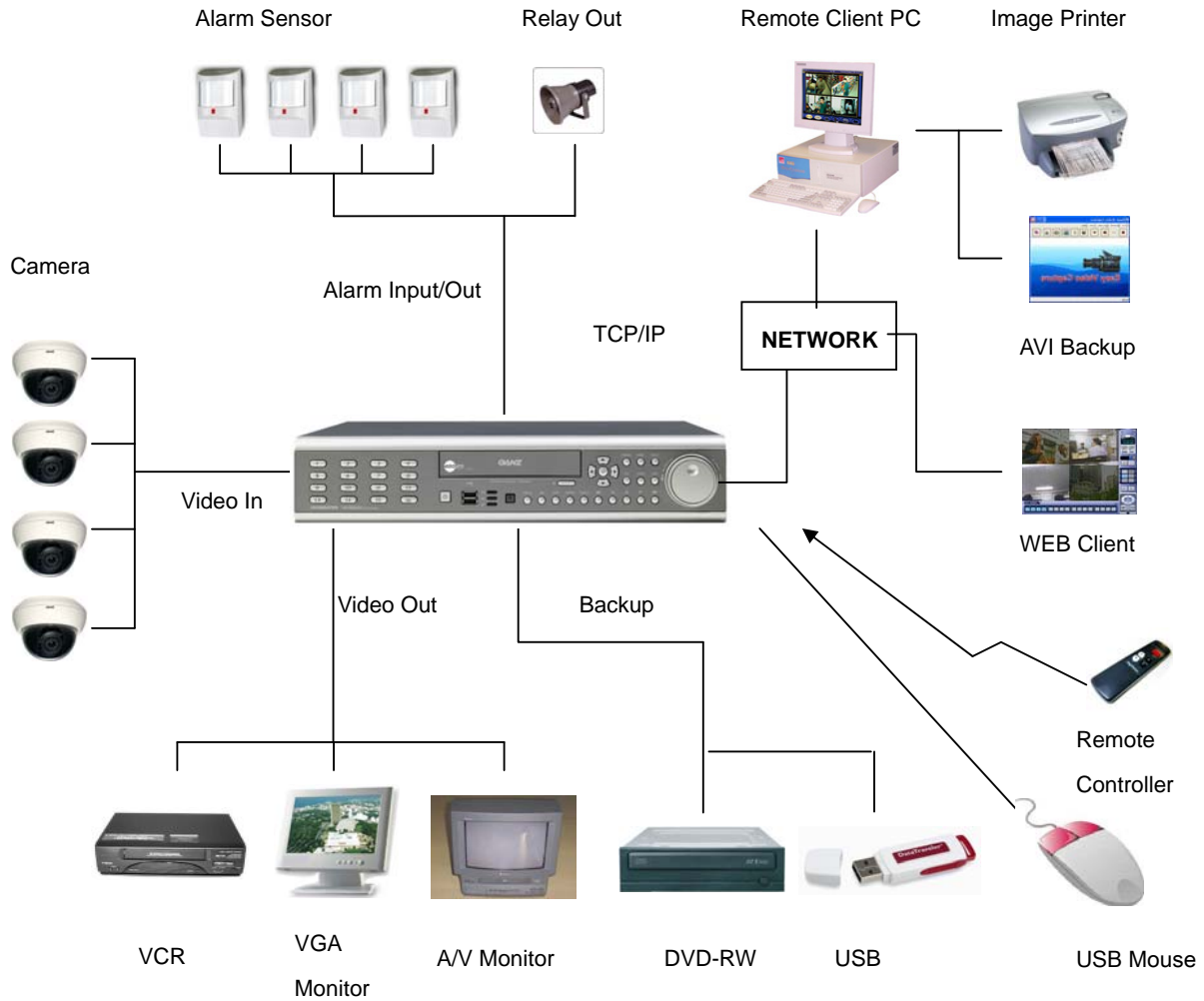
Internal DVD-RW Drive



USB Thumb Drive

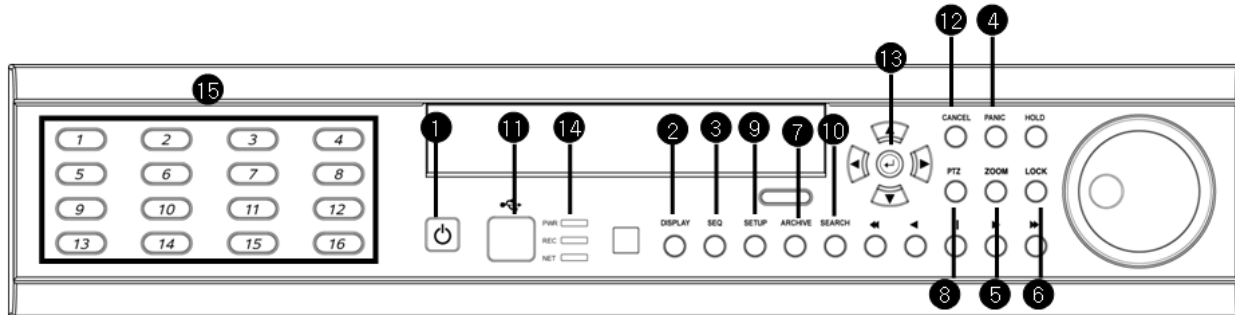
SPECIFICATION&ORGANIZATION

System Organization



PRODUCT DESCRIPTION

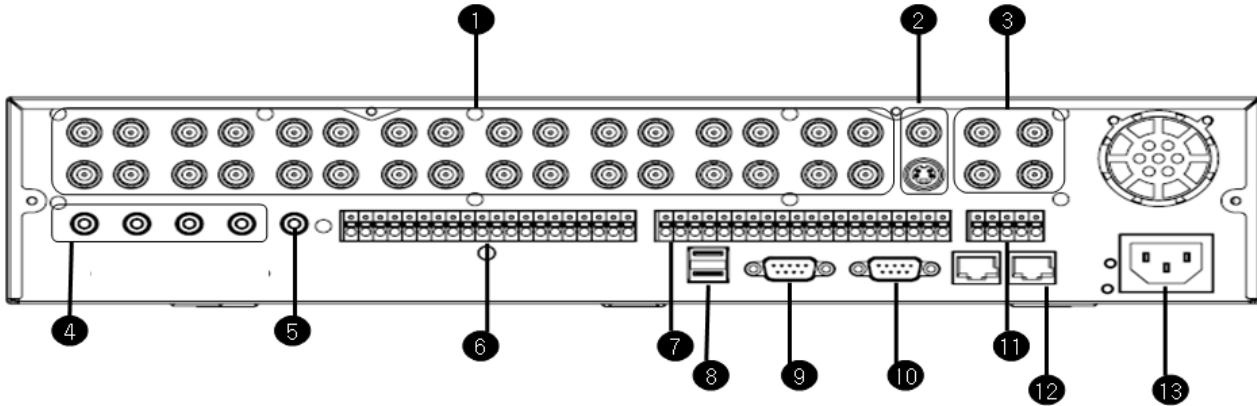
Front Panel



- ① Power : System Power On/Off
- ② DISPLAY : Select Screen Division Mode or Rotation Mode
- ③ SEQUENCE : Select Sequence Screen Mode
- ④ PANIC : Trigger Panic Recording Mode and Panic Relay Output
- ⑤ ZOOM : Digital Zoom on Live or Playback Image
- ⑥ LOCK : Front Panel Lock Button
- ⑦ ARCHIVE : Go to Archiving Menu
- ⑧ PTZ : Go to Camera PTZ Control
- ⑨ SETUP : Go to System Setup Menu
- ⑩ SEARCH : Go to Search Menu
- ⑪ USB PORT: USB Port for use of a USB Memory Stick and/or USB HDD Backup.
- ⑫ Mouse left Click
- ⑬ Mouse Right Click
- ⑭ LED Indicator : Indicates Present System Status. (POWER, REC, NETWORK)
- ⑮ Channel Selection Buttons (1~8/16) : Select Channel or Input Password
 - Directional / Navigation Buttons (UP, DOWN, LEFT, RIGHT, ENTER)
 - Remote Controller Input Sensor (IR)
 - EJECT : Eject DVD-RW
 - ◀ ◀ / ▶ ▶ : Focus Adjust (Near/Far) or Reverse Play / Rewind
 - II: Pause Playback
 - ▶ / ▶ ▶ : Iris Adjust (Open / Close) or Forward Play / Fast Forward
 - JOG / SHUTTLE : Outer wheel – variable REW or FF; Inner wheel – scroll frame-by frame while PAUSE.
 - HOLD : Hold Current JOG / SHUTTLE Position

PRODUCT DESCRIPTION

Rear Panel

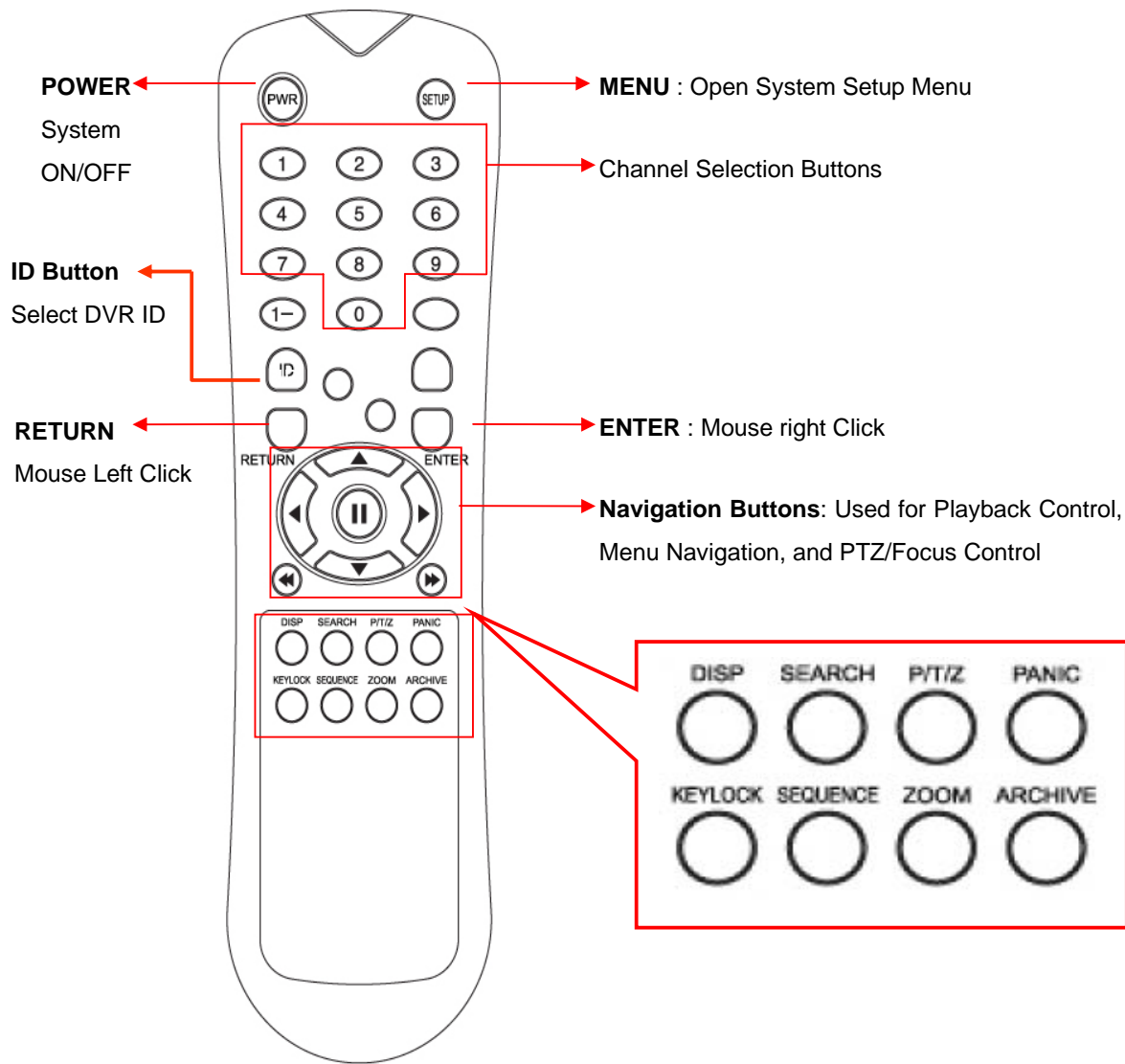


- ① Video IN / Loop : BNC Video Input Port, BNC Video Loop Output
- ② Monitor out : BNC Monitor Output
SVHS : Output Video by Connected SVHS.
- ③ Spot #1 ~ #4 : 4 x BNC Output to Individually-Sequenced Spot Monitors
- ④ Audio In : 4 x RCA Audio Line Input Terminal
- ⑤ Audio Out : RCA Audio Line Out Terminal
- ⑥ Alarm : 16 x Input TTL Alarm/Sensor Input Terminal
- ⑦ Relay : 16 x Relay Output Terminal
- ⑧ USB PORT: USB Port for use of a USB Memory Stick and/or USB HDD Backup
- ⑨ VGA OUT : VGA Main Monitor Output
- ⑩ RS-232C : Serial Configuration Port for Program Debugging
- ⑪ RS-485 : Serial Interface for PTZ device connection and control
- ⑫ RJ-45 jack : 10/100 Ethernet LAN/WAN connection (for Remote Access and Configuration)
- ⑬ AC Power Input

Tip

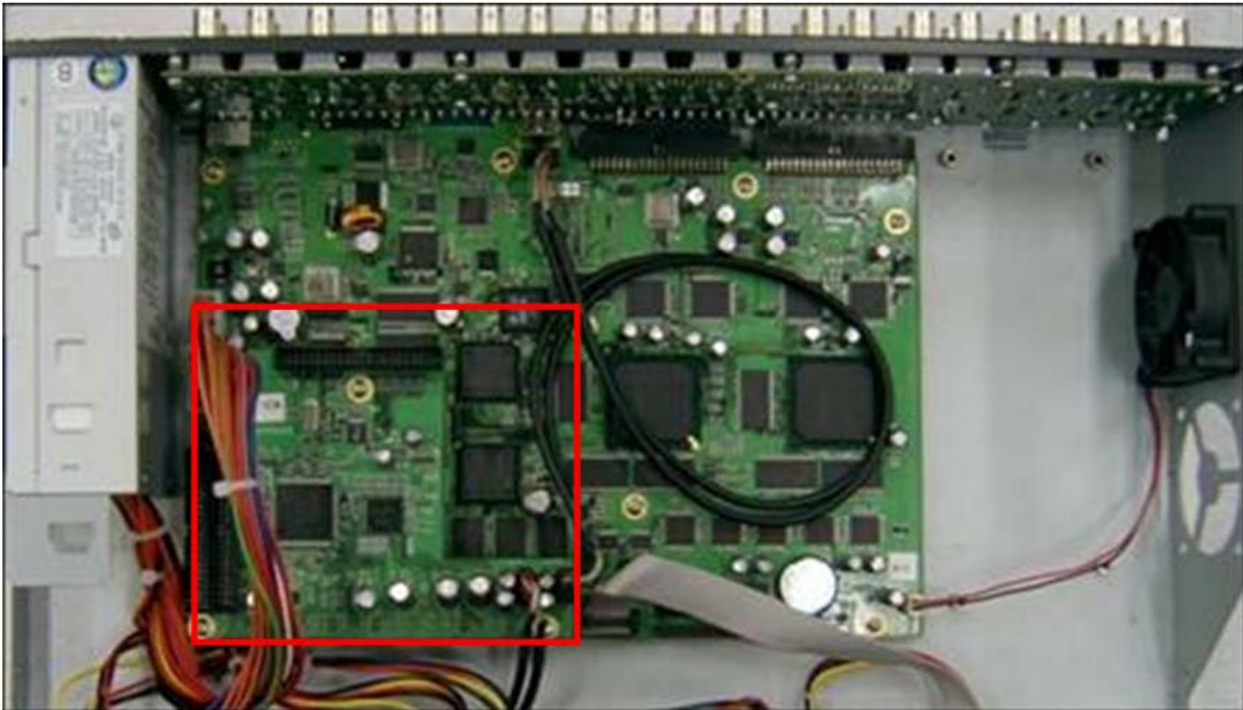
- For System Installation, please install after turning off System's Power.
- VGA monitor is the main monitor. Thus if you connect the CRT monitor with monitor out, you cannot see the menu.

REMOTE CONTROLLER

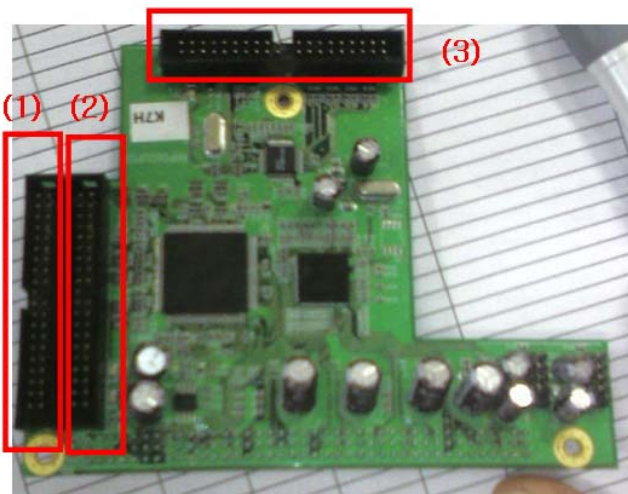


※ If there are several DVRs together, each DVR must be set with a different ID. You can control all The DVR's from one controller, by setting DVR ID on controller using the ID button.

HDD, DVD-RW CONNECTION



Above is the mainboard picture after opening the top cover.
The connection board is in red box



- (1) is the port for system disk(master disk). Install the first HDD at this port. (HDD jumper location should be "Master").
- (2) is also the port to connect additional HDD.
- (3) is the port for DVD-RW only. In case the HDD is connected at this port, HDD would not recognized

POWER ON



Press the power button.

The DVR startup screen detects and checks the HDD and DVD-RW.



After startup process is completed, "login" display appears for inputting the Password.

(Default password is just leaving is as empty column. Next, click the "Logon" button.)



The DVR starts the normal operation and it shows default display of all 16channels.

Three pop-up displays would show current system information, live log and live alarm situation.

C: Continuous Record

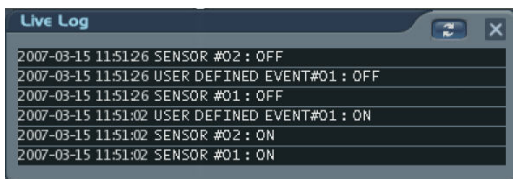
M: Motion Record

A: Alarm Record

P: Panic Record


Live System Info

- 1) Shows percentage of HDD used.
- 2) User Connection Information
- 3) Current recording frame information
- 4) The Backup situation



Live log

It shows the live log.

 : Live log can be removed by pressing this button.



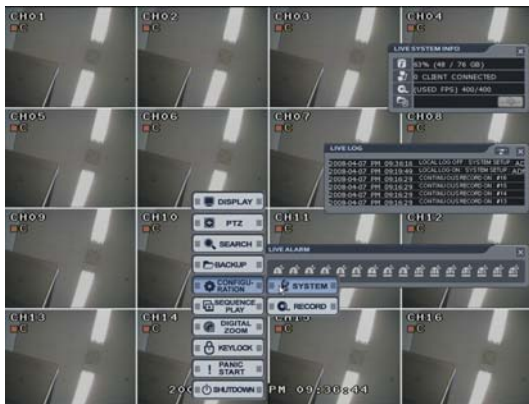
Live Alarm

Alarm Detection channel show each channel.

When the operator drags the mouse to the bottom left of the screen, this pop-up screen will appear.

By pressing each button, the operator can turn (On/Off) the functions of the above pop-up screens.

LIVE DISPLAY



Press the mouse right button from live display and the menu screen would be shown.

When “setup” button from front panel is pressed, it will enter “system setup menu of configuration” directly.

Configuring the Live Display



Click the right mouse button on the Live Display screen, next click the **DISPLAY** menu.

- Display Type: The operator could select 5 different display types.

Camera Arrangement: The operator can edit the camera location for each display type.

After clicking the one of 16 channel buttons, select below section. Then display channel will be changed according to the selection. Additionally the operator can select next display by clicking the arrow buttons.

PTZ



Click the right mouse button on the Live Display screen to click the **PTZ** menu.



• PTZ controls appear like above.

- 1) Select the camera.
- 2) Control the camera direction.
- 3) **Parameter** Press this button. The operator can control the PTZ detailed configuration with pop-up screen.
- 4) Control the Zoom, Focus, Iris.
- 5) Assign the Preset.
After moving the location, select the number and press the [SET] button.
Camera will move as assigned location when pressing the [PLAY] button after selecting the number”.
- 6) Assign the Pattern.
After selecting the number, click the [PLAY] button.



Pattern Mode

- SEQUENCE PATTERN

Set preset position. [Move to any position by direction keys and click the [SET] button.

Select [SEQUENCE] in “PATTERN MODE.”

To make starting position, click the [SET] button in “PATTERN”. ([SET] button is activated.)

Select preset Number in “PRESET” and click the [PLAY] button. (Have to select more than two preset)

ex) select preset No 1 and click the [PLAY] button. Next select preset No 2 and click the [PLAY] button.

To make stop position, click the [SET] button in “PATTERN.” ([SET] button is not activated.)

To run, click the [PLAY] button in “PATTERN.”

-CRUISE PATTERN

Select [CRUISE] in “PATTERN MODE.”

To make start position, click the [SET] button in “PATTERN.” ([SET] button is activated.)

Click the direction key by manually.

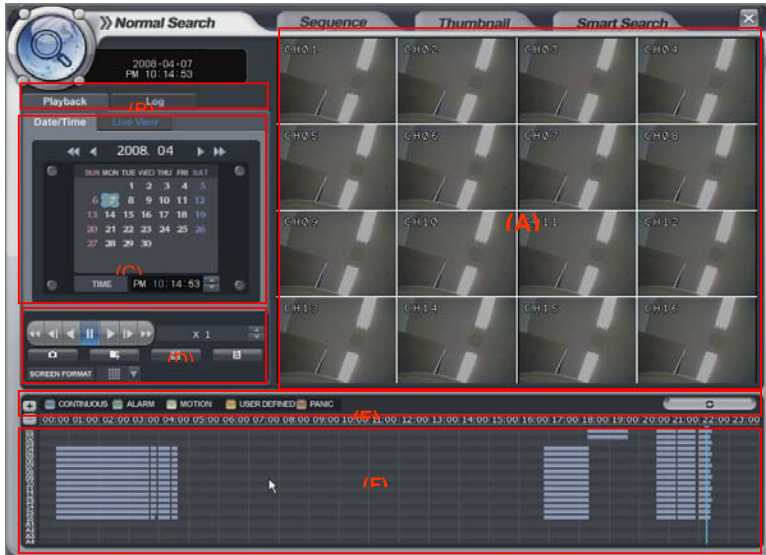
To make stop position, click the [SET] button again in “PATTERN” ([SET] button is not activated.).

To run, click the [PLAY] button in “PATTERN.”

SEARCH

The operator can search the recorded data from Normal, Sequence, Thumbnail or Smart search folder.

Normal Search



Click the right mouse button on the Live Display screen and click the **SEARCH** menu.

Select the "SEARCH" icon and press the "SEARCH" button.

Logon display shows to input the password.

- (A) It shows the backup display.
- (B) Select either "Playback" or "Log"
- (C) Select the date and time for searching
- (D) The window would show the search in detail.
- (E) Each recording configuration would show in different color.
- (F) Shows the recorded data.

• Playback-> Date/time

- Select the date. When the date has recorded data, it would show with color at (F).

Select the time. The operator can select the time from timer or by drag the timeline bar from (F).

- Click the button for playback from (D),

- Playback speed is from 1X to 128X forward and backwards.



: Click the button for snapshot backup. Then it would show below screen.

During the playback, the operator can save the desired image.

Input the snapshot tag.

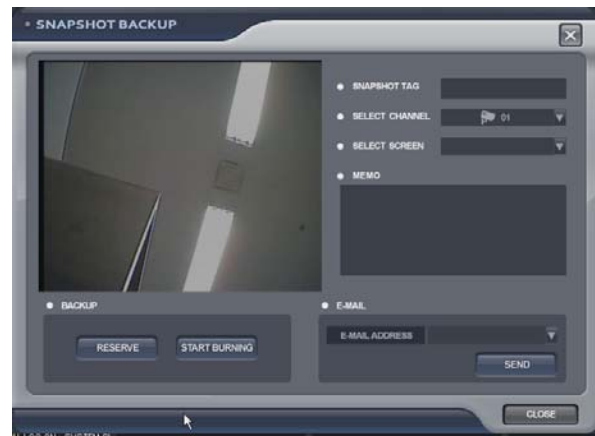
Select the channel.

Select the screen.

Input the Memo.

To save the image, click the [RESERVE] button.

(The operator can check the saved image from backup Date Management of backup menu).



START BURNING: snapshot image can be burned with USB device or DVD-RW.

E-mail: snapshot image can be sent by E-mail.



: Click the button for AVI archiving. Then it would show below screen.

During the playback, the operator can save the AVI file for a certain period.

Input the archiving tag.

Select the channel.

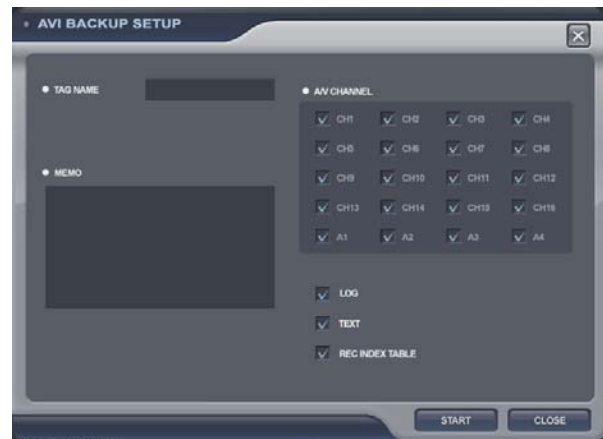
Tick on LOG, TEXT, REC INDEX TABLE

Input the Memo.

Click the "START" button.

Then, "AVI archiving" button color would change to red. (To use this function, the playback should work certainly. If not, it can not save AVI file).

For stopping, click "AVI archiving" button again.



Then the AVI BACKUP screen would appear.

To recording continuously, click the "CONTINUE" button.

Or to stop, click the "STOP" button.



Backup data information would be shown in this screen.

How to burn the backup and reserve is same with how to save the snapshot.

(The operator can check the saved image from backup Date Management of backup menu).



: Click the button for full screen from (D). Then below screen would be shown.

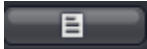
For returning, drag the mouse to the bottom of screen.

Then below icon would appear with return icon.

Click the "RETURN" button to return to the original screen.

The operator can control the playback speed with below icon from full screen playback mode.





: Click the button for viewing the log from (D).

Then below screen would be shown. Current log would appear.
For returning, click the same button again.



: Click the button for changing the playback display from (D).

The operator can select the playback display mode.



The display color for the recorded data at Timeline from (E), appears differently for each type like above

• Playback -> Live View

Select the "Live View".

Then it shows current live display instead of the calendar.

The function with below icon work equally.

You can see both the live display and playback display at the same time.



• Playback-> Log

Click the “log”.

Then it shows left screen.

Select the date to see the log from calendar.

Select the event section to see the what the operator desires.



Click to start the “search”.

Click the button to view with timeline.

The option to search each channel can be selected.

Select the log.

For playing the recording data with log, double click the log.

Click same button again to return to the original screen.



Page Down, Page Up, Oldest log and Latest log in order.

Sequence Search

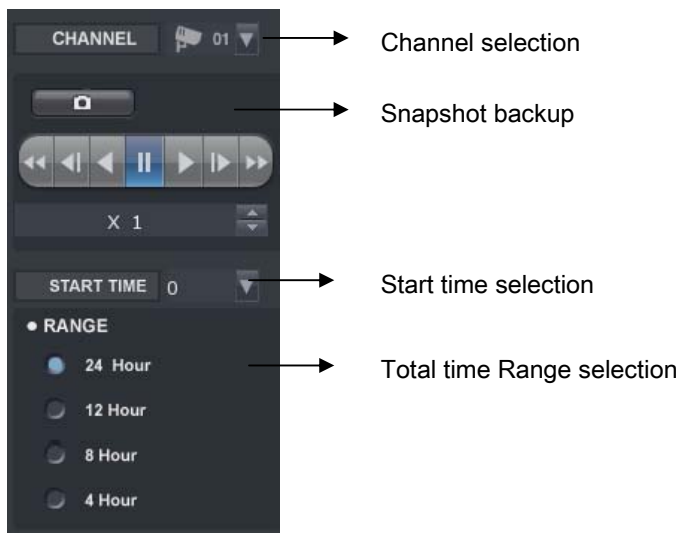
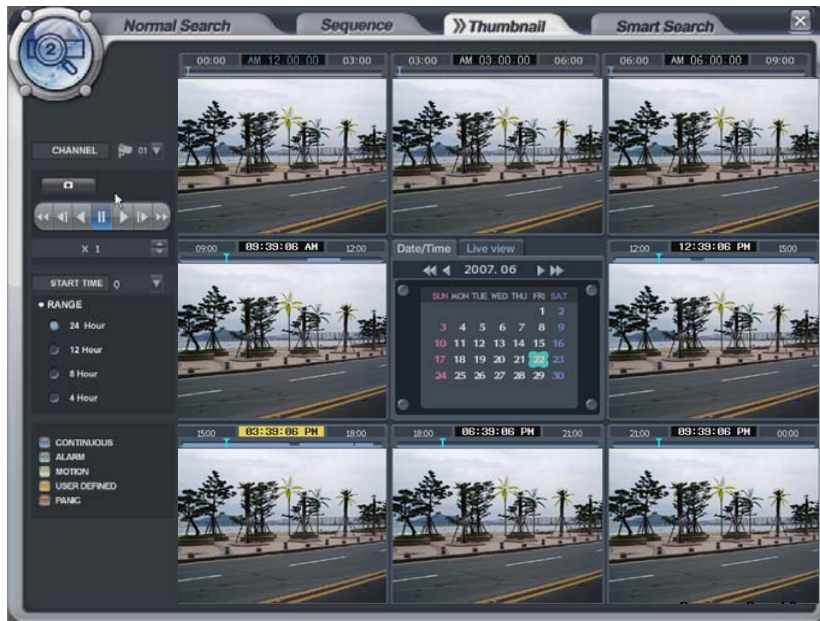
- The operator can search frame by frame.



- Select the channel.
- Select the date.
- Select the time.
- The operator can select the time from timer or by dragging the timeline bar.
- The method to search, is almost the same as normal search.

Thumbnail Search

- The operator can search with divided screens in each time range.

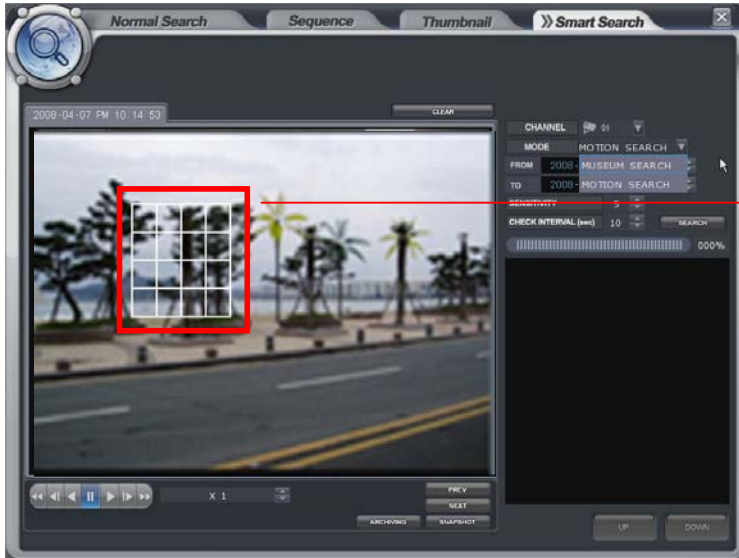


The operator can select the playback location by Drag and drop Timeline bar.



- Select the channel.
- Select the date.
- How to search is almost same with normal search.

Smart Search



- The operator can search by Museum search or Motion search.
- Select the camera.
- Select the area that requires to be search by dragging the mouse.

- Select the search method. (Museum or Motion)

- Museum search

This search indicates or generates event (consistent/inconsistency) when search is compare with the starting image and also when the image continuous to occur more than Designated Time on the Designated Accuracy of the Selected Area.

For example, assume that a certain object got lost in the museum. Then search the point from before it was lost until the object was located(select area β). Thus, the huge change (accuracy of designated β) could be grasped.

- Motion search

It is a search method to indicate or generate event when the motion occurs more than Designated Time on the Designated Accuracy of the Selected Area.

For example, to detect the motion of appropriate location(select area β) of the image. Set the accuracy and interval(designated time β), to detect the event. Next start search for the event to occur according to the assigned time interval when there is motion.

- Select the time.(From and To).

- Select the sensitivity and check interval(sec).

Sensitivity: sensitivity to check the location change of any object from selected area.

(1: sensitivity High, 10: sensitivity Low)

Check interval: Check interval to check the location change of any object from selected area.

(unit: second)

- Prev. button: Playback the image of previous log by based on current time.

- Next. Button: Playback the image of next log by based on current time.

BACKUP

Backup



Click the right mouse button on the Live Display screen and Click the **BACKUP** menu.

- Select the “BACKUP” icon and press the “BACKUP” button.
- Logon display shows and input the password. It shows the backup display.
- Input the “TAG NAME” and check if want to backup the “LOG, TEXT and REC INDEX TABLE” information.
- Select the Start time and End time with timer or timeline bar.
- Click the “QUERY” button. Then it shows data information at “BACKUP INFO”.



: Click the button to save the data after inputting the backup tag.

(The operator can see the saved data from backup Data Management.)



: Click the button for burning the data.

Then it shows “Burn” screen. Select the device (DVD, USB)

Foreground: During backup, the operator can not control the other function.




Background: During backup, the operator can control the other function.



Backup Data Management



- The operator can see the saved snapshot image and AVI file form Backup menu and search menu.

-  : Detailed information
-  : Delete
-  : Burning

CONFIGURATION - SYSTEM



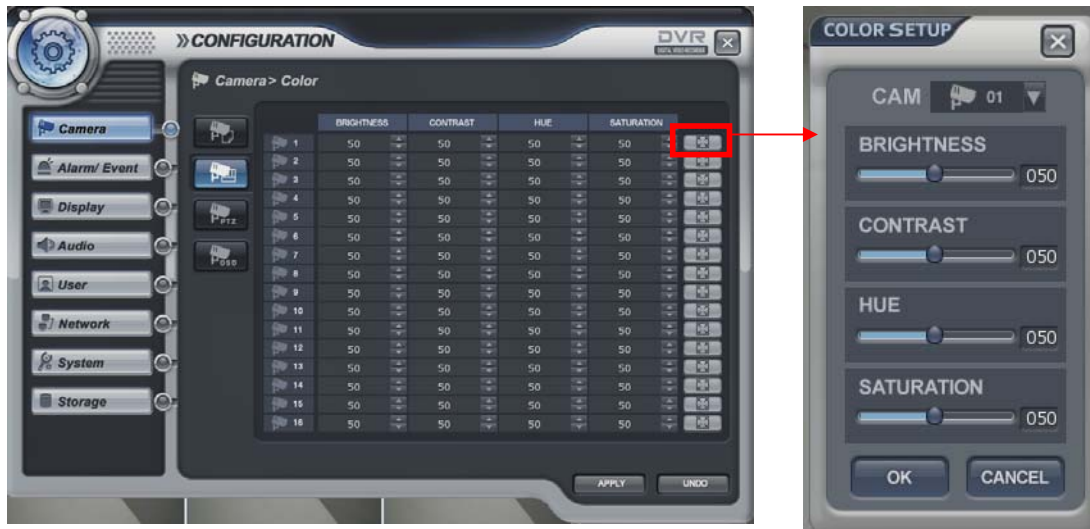
Click the right mouse button on the Live Display screen and Click the **CONFIGURATION** menu and Click the **"SYSTEM"**.

Camera -> Title

- Camera Title: Input the Title and description with virtual keyboard.



Camera -> Color



- Camera color setup: Select the Brightness, Contrast, Tint and Color. The operator can control the color of the live display by clicking the



Camera -> PTZ



- Select the address, protocol and Baud rate of each camera. The operator can control PTZ detailed setup when the **PARAM** on is clicked.

Camera -> OSD




- Select the COVERT for each channel, MAIN DISPLAY OSD, SPOT OSD setup

※ How to use the virtual keyboard



Double Click the left mouse button to enter data.

Then, the virtual keyboard would appear. Select each character from the virtual keyboard.

To use the small character, click the  button.

Alarm/Event -> Sensor



Select the Activation, Normal State (High/Low-It is related with sensor type) and input the description.

Alarm/Event -> Video Loss

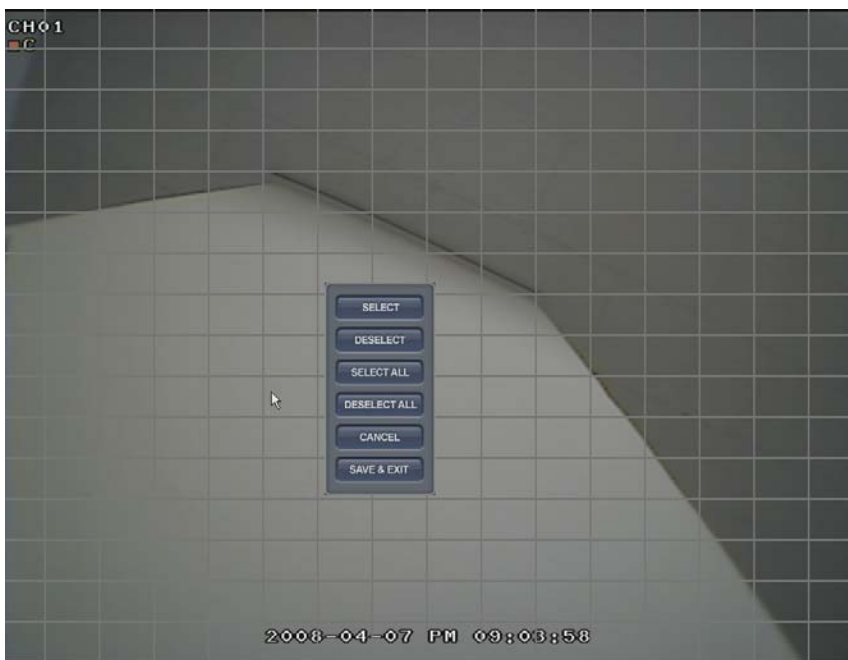



Select the video loss Activation.

Alarm/Event -> Motion Detection



Select the Motion Detection, Activation, Sensitivity (1~10) and Motion Area.



The operator can select the motion area from above screen after clicking the  button. After selecting the motion area by dragging the mouse, click the mouse right button, then it shows pop-up menu that relates with selection

Alarm/Event -> Storage



- File system Event
 - Disk Full: To check if the disk is full, turn on/off Activation.
- Smart Event
 - Smart Warning: To check the HDD trouble, turn on/off Activation.
 - Smart Check Period: Select from 1 to 24 hour.

Alarm/Event -> User Defined



The operator can make the User Defined Event with current event's mixing.

When two events are happened at the same time, the operator can setup how it works. (Mixing condition is "AND" and not "OR")

Select the Activation of each channel.

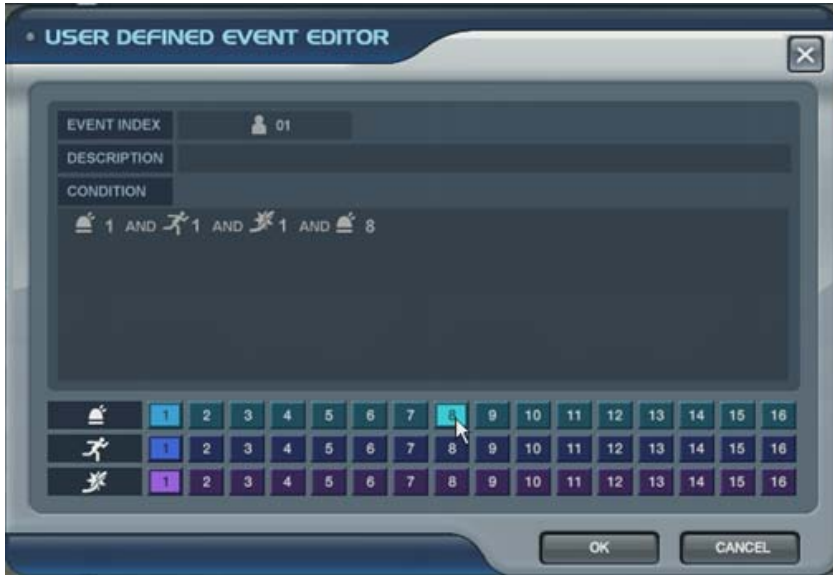
Setup the detail configuration after entering the “EDITOR” by clicking the



selected channel.

Select the sensor, motion, Video loss, Storage Event and User defined Event as user requires.

After selecting it, action type can setup from Event Action Setup.



Alarm/Event -> Event Action -> Digital Out



- Linked Event: Select the event that want to assign the action.

(Alarm, Motion, Video loss and User defined)

- Select the Activation on/off.

- Normal state: Select the operation type. (High / Low)

- Dwell Type: use/ Not use

Time: 5- 300 second and until pressing the any key.

Alarm/Event -> Event Action -> E-mail Notification



- When a selected event occurs, an E-mail notification will be sent.
- Tick on/off Activation.
- Select the Sensor, Video loss, Motion, Storage (Smart alarm, HDD full) and user defined event).
- Input the memo.



ADD button: Please add the User, who wants to get the E-mail notification.



DELETE button: Delete the User who had been already registered.


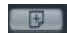
Alarm/Event -> Event Action -> Remote Client Notification



- When the selected event happens, it notifies the event to Remote client.
- Tick on/off Activation.
- Select the Sensor, Video loss, Motion, Storage (Smart alarm, HDD full) and user defined event).
- Input the memo.

Alarm/Event -> Event Action -> Video Popup



- When the selected event happens, the screen pop-up at the selected monitor.
- After selecting the event (Alarm, motion, User Defined Event) for pop-up, tick on/off activation.
- Assign the channel which requires being pop-up on each Monitor.
After selecting the channel to assign, click the mouse right button. Then channel will be pop-up.
- Assign the pop-up dwell time.
-  ADD button: Please add the item that requires to be pop-up.
-  DELETE button: Delete the item that had been already registered.

Alarm/Event -> Event Action -> Buzzer



- To selected event, select buzzer on/off.
- After selecting the event (Alarm, motion, Video loss, User Defined Event) for buzzer, tick on/off activation.
- Dwell Type: Use/ Not use
Time: 5~300 second and until desired time by pressing any key.

Display -> Screen Template

Setup the display configuration. It is used when the operator wants to see live display with sequence mode.

This menu should be setup before setting the Main Display Sequence.



The operator could select the screen mode with 1, 4, 8,9,16 division by clicking above icon.



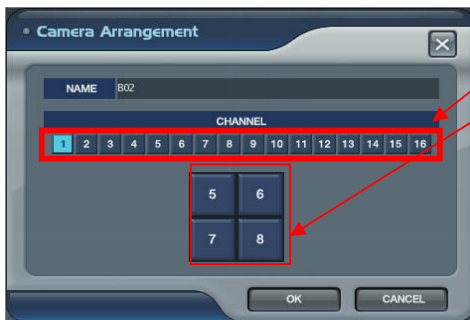
ADD button: Please add the item to be pop-up.



DELETE button: Delete the item which has been already registered.



EDIT button: Edit after selecting current screen template



-Click the ADD or EDIT button and the screen could be seen.

- Select the channel.

- Select the location of channel that requires to be changed.

- Then, screen template is made or changed.

- The operator can make new screen template or modify the current screen template

Display -> Main Display Sequence

- Main Display Sequence: To start the sequence, the operator selects and makeup the working sequence type.



- Press the ADD button.
- Select the new list (It shows in Blue Square)
- Input the name with virtual keyboard and select the dwell time (5-100 sec).
- Click mouse right button.
- Then it show screen template list with each division.
- Select the screen templates that require in sequence.
- The operator can add Max.16EA screen template by same method.
- Press the DELETE button after selecting the list then the list would be deleted.
- To add on the current setup, it can be changed after selecting each template of current sequence.

* The max. list Number is 16EA.

The screen template which could be selected and it is related with screen template setup of front page.

Display -> Spot#1-4 Display Sequence

In case of advance spot, setup method is almost the same with main display sequence. There is only one difference.



The screen template could be selected in only two types.(1,4 division)

- Press the ADD button.
- Select the new list (It shows in blue square)
- Input the name with virtual keyboard and select the dwell time (5-100 sec).
- Click mouse right button.
- Then it show screen template list for each division.
- Select the screen template which is to be in sequence.
- The operator can add Max.16EA screen template by same method.
- Press the DELETE button after selecting the list and the list is deleted.
- To add on the current setup, it can be changed after selecting each template of current sequence.

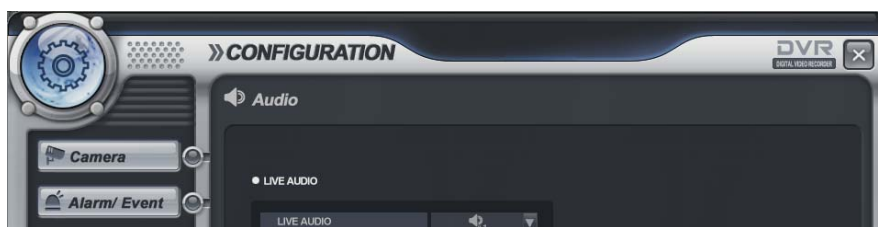
* The max. list Number is 16EA for each spot channel.

How to play and stop the sequence.

After clicking mouse right button from live display, select the “SEQUENCE PLAY” or “SEQUENCE STOP”
Additionally, press the “SEQ” button from DVR.

Audio

- Setup the audio configuration.



- Live Audio: Select the Live audio channel.
- Network Audio: Select the audio transmitter and receiver.
- Buzzer: To press the key of front panel and remote controller. Turn the Sound on/ off.

User -> User group



Default user group (administrator, manager, and user) cannot be deleted or edit.

After selecting “ADD” button, the operator can make the new user group with new authority.

Select “ADD” button, and “add group” screen would be shown.

It shows the virtual keyboard. Then, double click mouse left button to input the text.



GROUP AUTHORITY					
AUTHORITY	OWNED	AUTHORITY	OWNED	AUTHORITY	OWNED
SETUP STORAGE	<input checked="" type="checkbox"/>	SETUP USER	<input type="checkbox"/>	REMOTE LOG ON	<input checked="" type="checkbox"/>
SETUP ALARM SETUP EVENT SETUP RECORD	<input checked="" type="checkbox"/>	SETUP NETWORK	<input type="checkbox"/>	SYSTEM SHUTDOWN	<input checked="" type="checkbox"/>
SETUP CAMERA SETUP DISPLAY SETUP AUDIO	<input checked="" type="checkbox"/>	SETUP SYSTEM	<input type="checkbox"/>	SEARCH ARCHIVING	<input checked="" type="checkbox"/>

After inputting the new group ID and description, click the “ok” button.

Then select the User group ID. (It shows Blue Square).

Select the group authority and click “Apply” icon.



ADD button: Add new group.



DELETE button: Delete user group.



EDIT button: Edit user group.

User -> User



The operator can add, delete or edit the new user.

Select the "ADD" button and "ADD USER" screen would appear.

After inputting the ID, PW and E-mail with virtual keyboard, click "OK" button.

 : ADD

 : DELETE

 : EDIT

Network -> Configuration



DHCP: In case of “Dynamic IP”, select the “DHCP”

Click the “apply” button and the DVR gets the IP address automatically, after selecting the “DHCP”. To use the “Static IP”, input the IP address and other information manually.

DDNS (Dynamic DNS): This is used with a Dynamic IP address, which may be changed by the ISP at any time.

✘ **With DDNS, there is no need to enter the IP address on every connection, instead a name server address is used.**

- Tick on to Setup DHCP or manually input the unit IP address.

- Tick on to Setup DDNS and set the DDNS properties (user name, password, and domain name) and reboot the system.

- To access the DVR using the name server address, the format for the address is: http:// [user name].

[Domain]

((Example: http:// mydvr.dyndns.org) (user name: mydvr.domain: dyndns.org)

- User will need to input all of the correct DDNS information into the Network setup in order for the DVR to be able to update its new IP address to the DDNS server whenever a change occurs.

- If user is using a router in your network configuration, it is the router which must be setup for DDNS, not the DVR.

WEB SERVICE: If this is ticked on, user cannot connect through Internet Explore.

NET CLIENT SERVICE: If this is ticked on, user cannot connect through the Remote software.

IP, GATEWAY, SUBNET MASK and DNS SERVER: Input each value.

DDNS Server: Input DDNS server domain name.

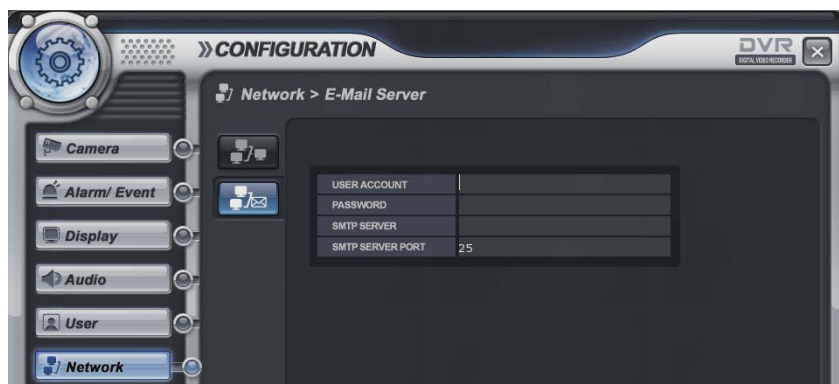
Net Client Port: Input net client Service Port # (Default:6400).

Web Service Port: Input the Web server port # (Default: 8080).

Max TX Speed: Setup Max Network TX Speed. (56k – 8192k).

♣ After making changes to the Network setup, click “Apply.” (The system will prompt you to reboot in order to save change.)

Network -> E-Mail Server



USER Account : Enter a username to identify the DVR in email messages.

PASSWORD : If SECURITY is set to ON, enter the password here.

SMTP SERVER : The SMTP outbound email server that should be used to send email notifications.

SMTP SERVER PORT : The outbound email port number.

System -> Information

Information

- Site Description: Input the name by virtual keyboard



- H/W version: DVR's H/W version
- S/W version: DVR's FW version
- Mac address; DVR's Mac address

Controller connecting

- Setup to control by the keyboard controller.
- Select the System ID, Protocol and Baud rate.

System -> Date/Time



- Date&Time: Current DVR's Date and Time. The operator can edit manually.
- Timezone: Select the Timezone.
- Date and Time format: The operator can change the Date and Time format.
- Network Time server: Input the network time server's domain name for getting the time automatically.
- Auto update and Time: DVR can get the time information automatically with assigned time duration after connecting with network.
- The default setup of D.S.T is on.

System -> Update



- Firmware Upgrade

The operator can update the F/W by USB device or DVD.

After saving the F/W in the USB and DVD, insert it to the DVR.

Select the F/W upgrade button and the above “Firmware Upgrade” screen would be shown.

After selecting the F/W from list, select the “UPGRADE” button.

DVR would re-boot automatically when the upgrade is finished.

- Factory Default: System will be initialized.

- System Configuration

Save: Current configuration will be saved in USB and other device.

Load: The configuration that was saved from other DVR could be loaded in current DVR.

- Select Language

The operator could select the language.

Languages may differ, depending on the firmware.

Storage -> Operation



- Operation mode: Select either overwrite/write once (no overwrite)
- Internal recording: It shows the internal HDD recording information which had been installed
- DVD Media: It shows the internal DVD-RW which was installed.

Storage -> Utility



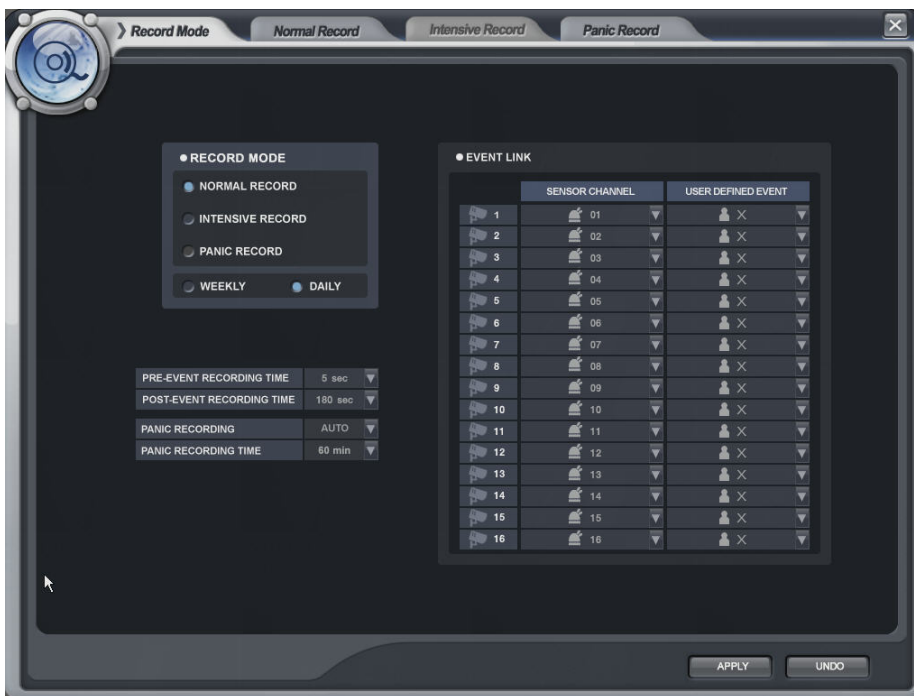
- Format
Click the "START" button and all data would be formatted.

CONFIGURATION - RECORD



Click the right mouse button on the Live Display screen and click the **CONFIGURATION** menu and Click **“RECORD”**.

Record Mode



- Record Mode

In case “Normal Record” is selected from record mode, the operator cannot enter “Intensive Record” setup. Also, the operator cannot enter “Normal Record” incase “Intensive Record” is selected.

- Weekly/Daily

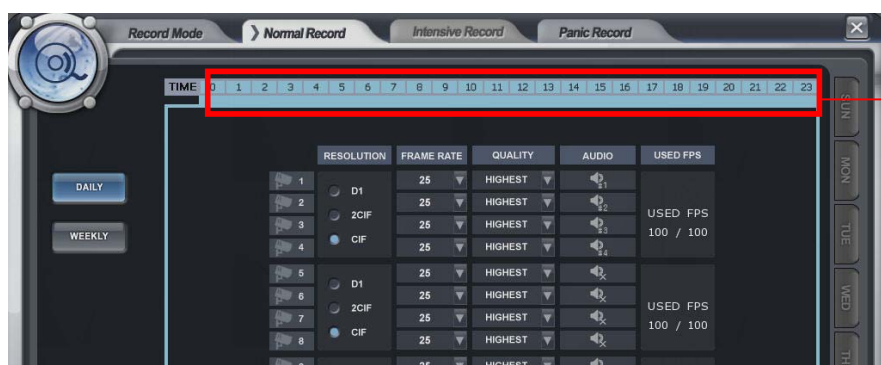
The operator can select the “Weekly” or “Daily” record setup from ‘Normal Record” and ‘Intensive Record” setup.

Thus, the DVR would record as daily or weekly on setup configuration of “Normal and Intensive record” setup mode.

- Pre-Event Recording Time: When the DVR is not in continuous recording mode, this setting determines the amount of footage to be recorded before an event occurs.
(motion detection, alarm input etc.)
- Post- Event Recording Time : When the DVR is not in continuous recording mode, this setting determines the amount of footage that is to be recorded after an event occurs. (motion detection, alarm input etc.)
- Panic Recording: Disable: Disables the Panic recording function
Manual: It works by pressing the Panic button from Remote controller or Front panel
Press the Panic button again to stop the panic recording.
Auto: After starting the panic recording, it would be stopped automatically if assigned time is over.
- Panic Recording Time: It is related with “AUTO” option of Panic recording.
- Event Link: Select the sensor channel and user defined event for each channel.

Normal Record

Parameter



-Drag the time to setup with mouse.

The setup is different for each time range, also according to different color.

In case of recording setup, the operator should setup as 4 divided parts.

The operator can setup Max.CIF, 120FPS each divided part.

- Select the Resolution.
- Select the Frame Rate
- Select the Quality. (Low, standard, high, highest)
- The operator can setup other divided part as same method.
- In case of Audio setup, it is assigned at Nr.1, 2, 3, 4 Channel basically.
(It can not be changed)

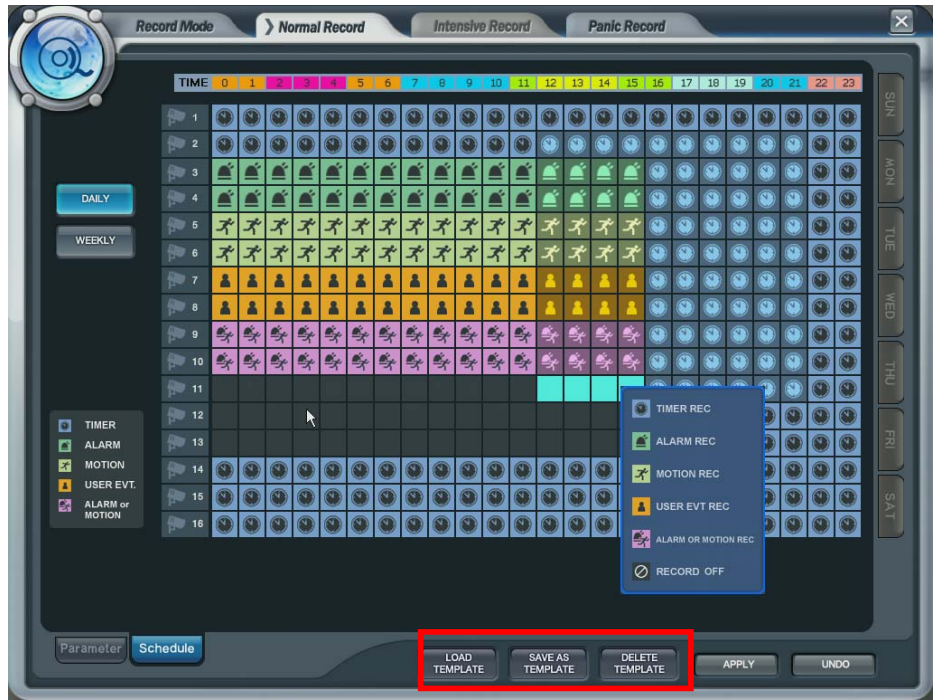
In case of weekly, it is almost same with daily setup. It can setup each date.

Schedule

The operator can select recording type (Timer, Motion, Alarm, User Defined, Alarm or Motion and Record off) each time, channel.

Drag the desired section for selection and click the mouse right button.

Then, recording option would appear. The operator can select the recording option for each time and channel.



- Recording setup Load, Save and Delete

The operator can make the various recording setup in DVR. This includes all setup from Parameter and Schedule.

Load Template: Load the recording setup which had been already made.

Save as Template: Save the current recording setup.

Delete Template: Delete the recording setup from list.



Intensive Record

In case of intensive record, record will be centralized at channel with events happening, as event priority.

Parameter



-Drag the time desired time for setup by mouse.
In case of setup, for each different time, the color is different.

The setup is same with normal recording setup.

It record as setup under normal condition. But when the event arises on channel, the channel with event setup would record as D1, 30 FPS automatically.

Incase the event happens at several channel at one time, it would share the max. recording rate appropriately.

For recording setup, the operator should setup as 4 divided parts.

The operator can setup Max.CIF, 120FPS each divided part.

- Select the Resolution.
- Select the Frame Rate
- Select the Quality. (Low, standard, high, highest)
- The operator can setup other divided part, using the same method.
- In case of Audio setup, it is assigned at Nr.1, 2, 3, 4 Channel basically.
(It can not be changed)
- Select the Intensive recording condition with Alarm, Motion and User defined event.

- In case of weekly, it is almost the same setup as daily setup. It can setup each date.

Schedule

The operator can select the record on/ off each time and channel.

Drag the desired section for selection and click the mouse right button.

Then, recording option will appear. The operator can select the recording on/off each time and channel.



- Recording setup Load, Save and Delete

The operator can make the various recording setup in DVR. These include all setup from Parameter and Schedule.

Load Template: Load the recording setup that are already made.

Save as Template: Save the current recording setup.

Delete Template: Delete the recording setup from list.



Panic Record

The recording condition is changed according to the panic record setup when the panic button is pressed or detecting the panic alarm.



In case of recording setup, the operator should setup as 4 divided parts.

The default setup is CIF, 30FPS.

Setup method is same with normal record setup.

The operator can setup Max.CIF, 120FPS each divided part.

- Select the Resolution.
- Select the Frame Rate
- Select the Quality. (Low, standard, high, highest)
- The operator can setup other divided part as same method.
- In case of Audio setup, it is assigned at Nr.1, 2, 3, 4 Channel basically.
(It cannot be changed)

- Recording setup Load. Save and Delete

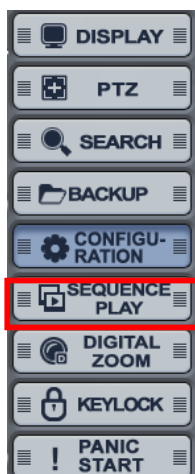
The operator can make the various recording setup in DVR. These include all setup from Parameter and Schedule.

Load Template: Load the recording setup that are already made.

Save as Template: Save the current recording setup.

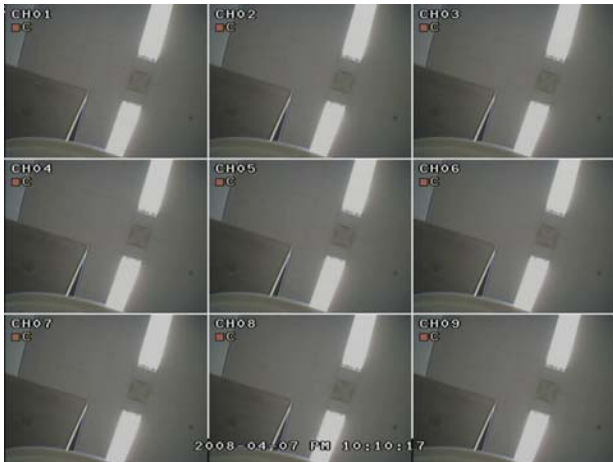
Delete Template: Delete the recording setup from list.

SEQUENCE



Click the right mouse button on the Live Display screen and click the **"SEQUENCE PLAY"** and **"SEQUENCE STOP"**.

- Select the “SEQUENCE PLAY” icon and press the “SEQ” button.
 Then, it shows sequence display which is installed. (Sequence Play/Stop).
 It is related with “Display -> Main Display Sequence”.
 Please setup the Main Display Sequence firstly.



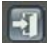
DIGITAL ZOOM



Click the right mouse button on the Live Display screen and click the “DIGITAL ZOOM”.





Click  button for returning to live display.

Click the mouse right button for changing the channel. Then, it would show the channel list.

Select the channel which is required to be changed.

Location can be controlled by dragging the mouse and Zoom in/out can be controlled by mouse wheel.

KEYLOCK



Click the right mouse button on the Live Display screen and click the **"KEYLOCK"**.

Select the "Keylock" by menu or press "Lock" button from Remote controller or Front panel, then the system is locked.

If any button is pressed under keylock condition, below would appeared.

- Input the Password. Then, system is unlocked.



PANIC



Click the right mouse button on the Live Display screen and click the

"PANIC START/STOP". 55

Press the "PANIC START," it starts panic record.

Please press the "PANIC STOP" to stop the panic record.



SHUTDOWN



Click the right mouse button on the Live Display screen and click the "SHUTDOWN".



Press the SHUTDOWN” and below would appear.

Pressing “OK” after inputting the Password and he system would be power off.



ERROR CODE LIST

Error Code #015 : Fail to reserve.

Error Code #026 : Can't enter the PTZ mode because all channels are covert.

Error Code #145 : Select backup channel.

Error Code #150 : Fail to send e-mail.

Error Code #181 : Flash memory error.

Error Code #182 : File operation error.

Error Code #183 : Upgrade file checksum error.

Error Code #184 : Flash memory size error.

Error Code #185 : Destination path error.

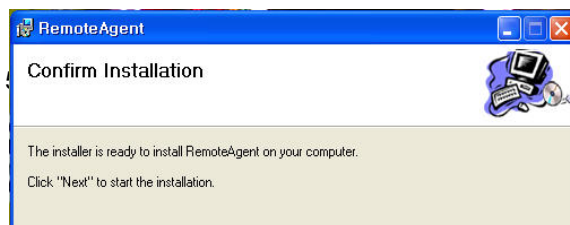
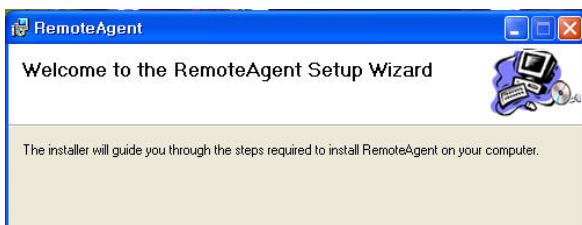
Error Code #186 : Written image checksum error.

Error Code #187 : Flash memory operation error.

REMOTE SW INSTALLATION

System Requirement

- ① Main Board (CPU): Pentium-500(Minimum), Pentium 4 recommended
- ② OS: Higher than Windows 2000,DirectX 7.0A
- ③ Memory (RAM): More than 128 M
- ④ VGA: Graphic card that support the DIRECT-X ※IMM4 Codec (When Playback Backup File)



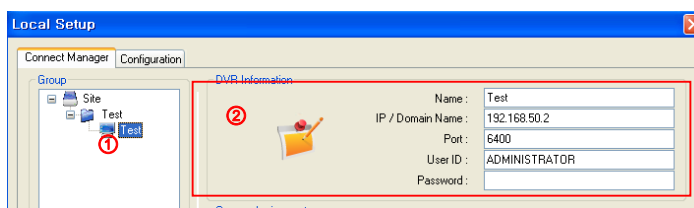
- ① Open DVD Drive and Run the RemoteSW' package, then Setup Menu would appear
- ② Close All Running Software and press Next to Move Next Step.
- ③ Showing Progress of Copying Files.
- ④ End DVR Remote Agent Program Installation.

Introduction



- ① Main Display : Shows single or multi-channel view of cameras connected to the DVR.
- ② Camera Selection Buttons : Indicates Camera #; click button to display a selected camera.
- ③ Minimize / Exit: Minimize DVR Client Window (to taskbar) or exit Remote Agent.
- ④ Date/Time Display : Shows current DVR System Date/Time
- ⑤ SEARCH: Enter Search Mode to Search and Playback Recorded Video
 SETUP : Set up properties of Remote Agent, including the list of DVR units to connect to.
 CONFIG : Allows Remote Configuration of a connected DVR unit.
- ⑥ DVR Selection : Choose a DVR to connect with the Remote Agent.
- ⑦ Connect : Connect to the selected DVR.
 Disconnect: Disconnect from the selected DVR.
- ⑧ Screen Division Selection: Change Screen Division Mode (1/4/9/16/36,64 view, sequence, full screen)
 Sequence/Manual Switch/Full screen
- ⑨ Begin Saving to AVI file: Begin Saving Live or Playback Images to the local PC in AVI format.
- ⑩ Event Log Viewer: Display Current Event Log & Jump to Event for Playback.
- ⑪ PTZ Control Button: Control Camera Pan, Tilt, Zoom, & Focus (for supported PTZ devices only)
- ⑫ Audio Button and Alarm: Control Bi-Directional Audio, Mute, and Toggle Alarm (On/Off).
- ⑬ Quit: Exit Remote Agent.
- ⑭ Connection Status: Indicates the Network Status of a connected DVR.

REMOTE SW LOCAL SETUP

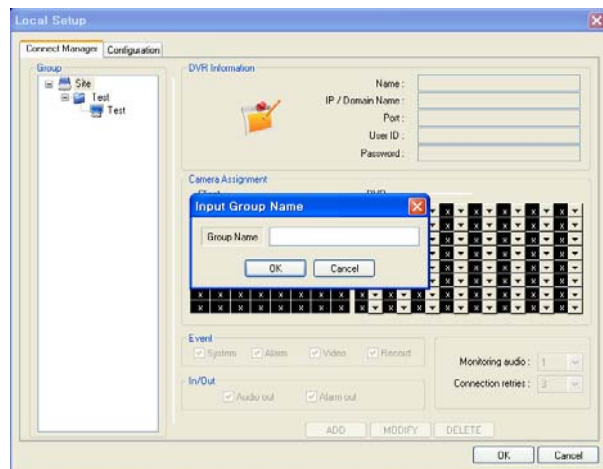
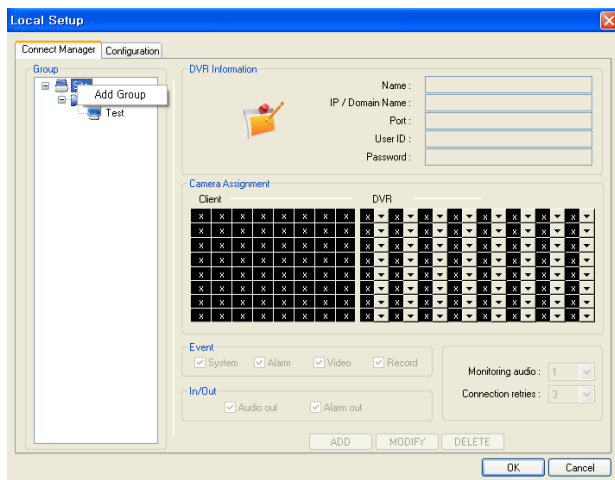




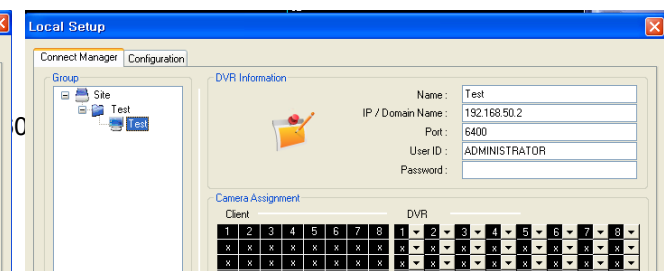
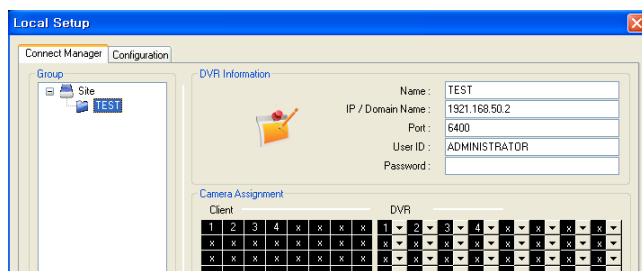
Local Setup

- ① Group & DVR list.
- ② DVR Information.
- ③ Camera Assignment : Setup camera.
- ④ Check Option (Event-system, alarm, video, record & In/Out)
- ⑤ Add, modify, delete group.

Add Group

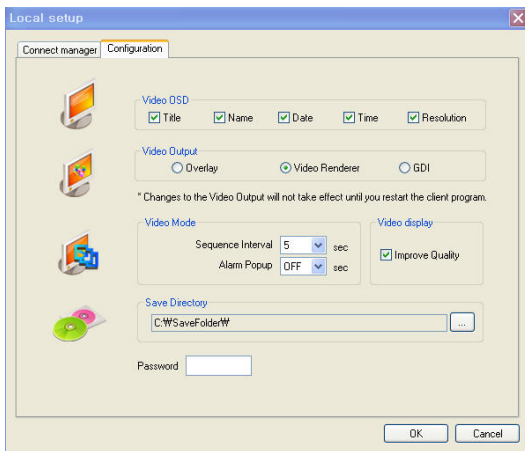


- ① Click the “Add Group” by mouse right button at ‘site’ of the left upper side.
- ② Input the Group name.



- ③ Input DVR information. (Name, IP, port, ID, PW)
- ④ Set camera position, tick on/off option and press 'ADD' button.
- ⑤ New DVR list is shown on the left upper side.

Configuration



- ① Video OSD : Select screen information. (Title, name, date, time)
- ② Video Output : Select video output method.
 - Overlay Mixer: Output without passing through CPU.
 - Video Renderer: Output through CPU.
 - GDI: In case the operator cannot see video by upper 2 methods, use this method.
- ③ Video mode
 - Screen switching interval: During the monitoring, select screen rotation interval time (2~300sec.)
 - Alarm pop-up: The Pop-up time of alarm happening channel would be on (2~60sec.) /off.
- ④ Save Directory: Designate remote PC's backup image saving folder.
- ⑤ Password: In case the password is inputted, it would ask to input the password to enter local setup menu.

Selection Network ID

- Select I/D to Connect Server.
- I/D can be Add, Change or delete at Setup.



TIP ※ Multi DVR Client: 4EA DVRs can control the live view, search or backup data and setup each channel at the same time.

Screen Division Selection

- 1*1 View: Showing One (1) Video which User Selected.
(Video Selection by Camera Selection Button)
- 4*4 View : 4 Screen Division Mode.
- 9*9 View: 9 Screen Division Mode.
- 16*16 View: 16 Screen Division Mode
- 32*32 View: 32 Screen Division Mode
- 64*64 View: 64 Screen Division Mode



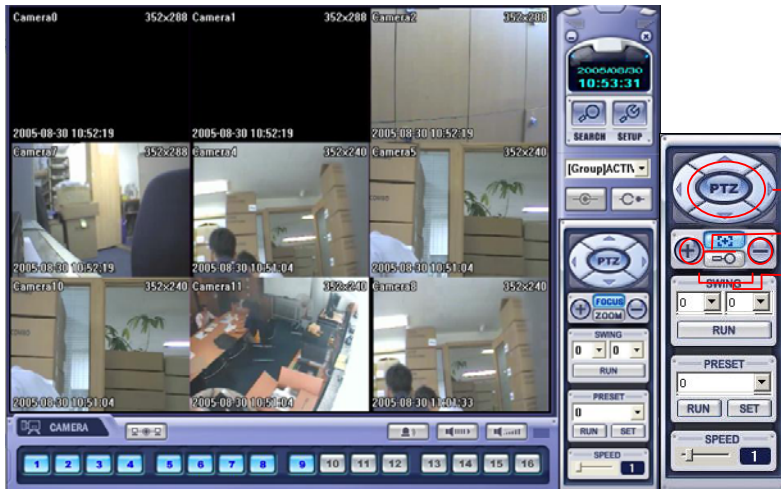
- Auto switch: Screen Mode Showing One by One (Same as division mode)
- Manual switch: Screen Mode showing One by One by clicking manually.
- Full Screen View: Present Video to Full Screen Mode.



Double Click the mouse to return to previous.

* Double Click Mouse to make the same function as Full Screen.

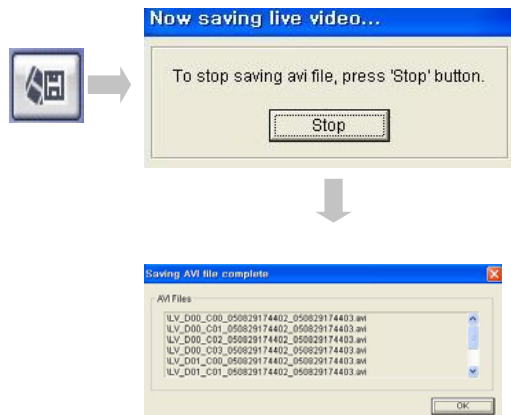
PTZ CONTROL



- P/T/Z Controller: Camera P/T/Z Control by Direction Keys
- FOCUS/ZOOM Select Button: Focus or Zoom Control by +, - Button
- +, - Control Button: Focus or Zoom Control

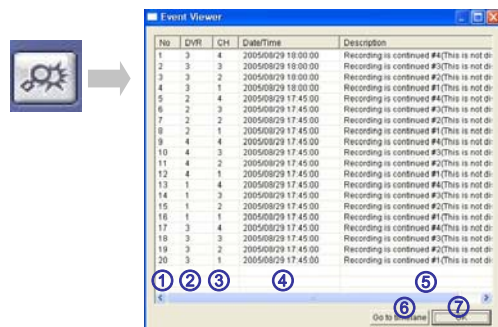
AVI File Conversion

- Click AVI Conversion Button to start AVI File Conversion.
- A message would be shown during AVI Conversion, then click “Stop” to save the AVI File continuously.
- ‘Press ‘Stop’ to Open Designate File Name & Saving Location, and Save AVI File.
- Saved AVI File could Open Ordinary Moving Picture Player or Backup Player.
- Moving Picture Player Codec Version Need Higher than Divx 5.1 & IMM4 Codec.



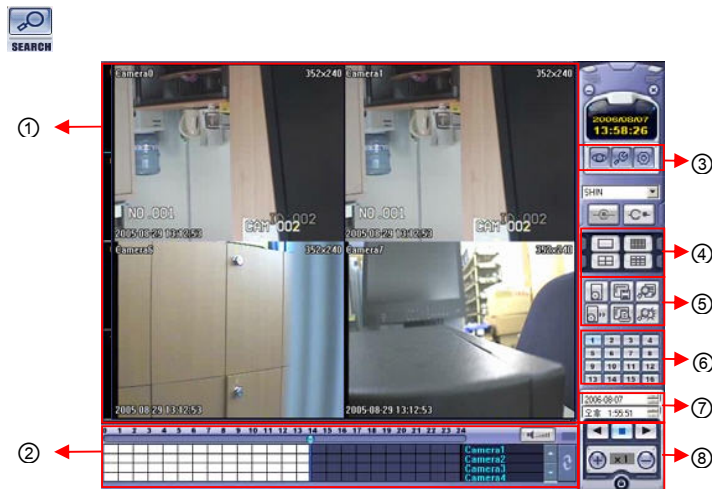
Event Viewer

- ① Indicate Event Occurred Order No.
- ② Indicate Event Occurred DVR No.
- ③ Indicate Event Occurred Camera No.
- ④ Indicate Event Occurred Time & Date
- ⑤ Indicate Event Detail Description
- ⑥ After selecting Event, Move Search Bar in Search Mode
- ⑦ Return to Search Main to play the Selected Event Image



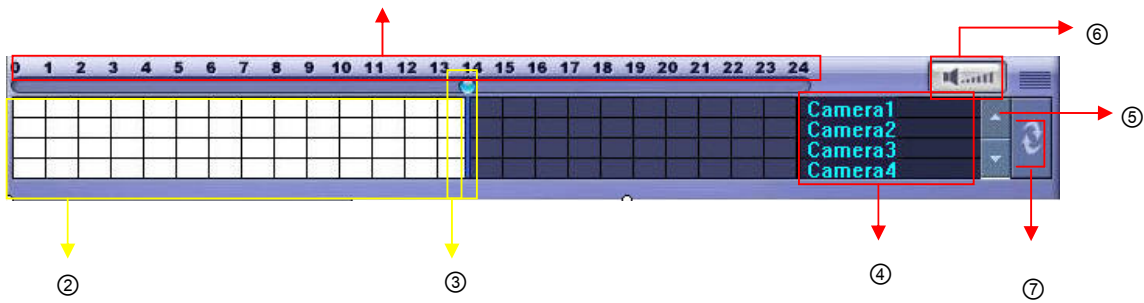
REMOTE SW SEARCH

Search Function Introduction

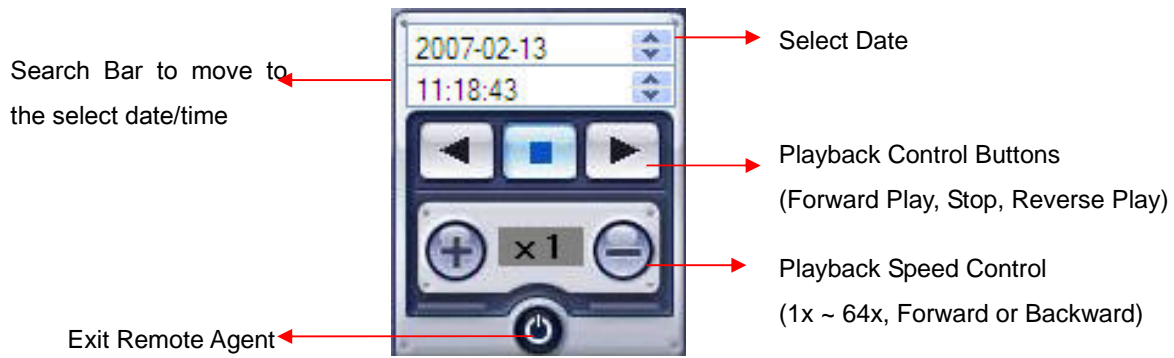


- ① Search Screen to play the Selected Video
- ② Search Bar: Search & Indicate Camera Recording Situation by Time Bar .
- ③ LIVE: Return to Watch Mode.
SETUP: Open Setup to Change Network Setup or Option.
- ④ Screen Division Selection: Change the playing Screen Division Mode .
- ⑤ Search: Option Backup Video or Search Event.
- ⑥ Camera Selection Button: Select Camera at 1*1 View .
- ⑦ Quick Search: Find Image by designating Date & Time.
- ⑧ Search Controller : Control Playing Video.

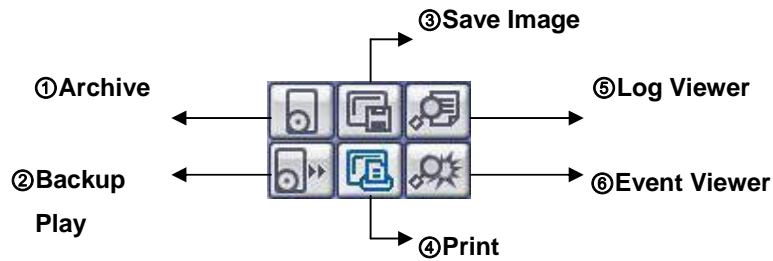
Search Method



- ① Indicates the Time of Day (0 ~ 24 hours) on Search Timeline.
- ② Indicates Recording Mode (Blue: No Recording, Red: Recorded Images Present)
- ③ Search Bar: Drag bar with the mouse to search through recorded video on the timeline.
- ④ Indicates each individual channel on the timeline.
- ⑤ If there are 5 or more channels, you may scroll through the channels using the arrow buttons.
- ⑥ Adjust the volume of the audio playback (if audio is present in the recording).
- ⑦ Refresh Recording Information Window



Search Option



- **Archive** – Backup Image from Server to Remote PC.

• Time Range

Time Range

Start Time : 2006-10-03 14:08

End Time : 2006-10-03 14:08

Archiving

Time Range

Start Time : 2006-10-03 14:07

End Time : 2006-10-03 14:07

Channel

Ch-1 Ch-2 Ch-3 Ch-4

Ch-5 Ch-6 Ch-7 Ch-8

Ch-9 Ch-10 Ch-11 Ch-12

Ch-13 Ch-14 Ch-15 Ch-16

Include Audio

- Enter the Starting and Ending Date/Time.

- Channel : Tick each channel to include in the Archive.
- Include Audio: Tick on/off to include Audio in Archive.
- Select All / Deselect All: Select/Deselect All Channels.

• Press OK to begin the Archiving process. As each AVI file is written to the PC, the system will display status.

Archiving Status

Archiving(1/4) is progressing...

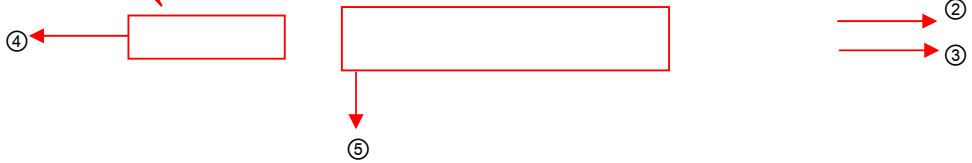
From : DVR(1) Channel 1 2006/10/03 13:13:00 - 2006/10/03 14:13:00

To: C:\WNB_D01_C01_0610031313_0610031413_(GMT+00.00)

• When the Archiving process has completed, the newly-created AVI files will be available for viewing.

- **Backup Play (DVR Player)** – Transfer to DVR Player

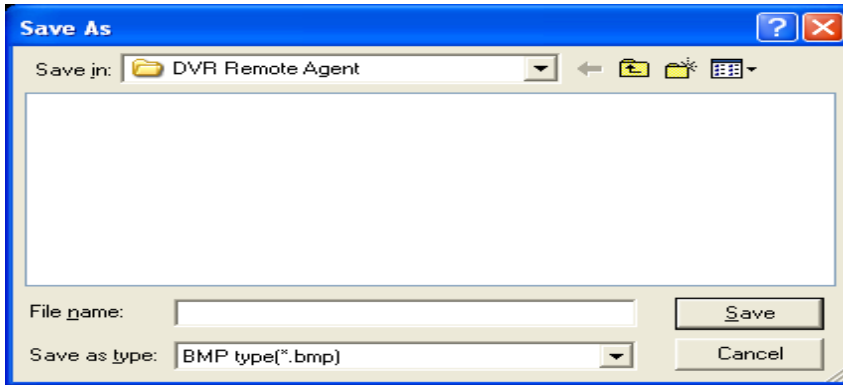




- ① Showing Image (Possible to Only 1*1View Mode).
- ② Backup File Open to Play First Video.
 Ex.: ch02_04131730_04131735.rec
 (Backup File for # 2 ch. Apr.13, 17H30M ~17H35M)
- ③ Indicate total playing time. Total: 00:02:00
- ④ Indicate Present Time & Date and Possible to Search Time & Date.
- ⑤ Search Controller, the Same Way of Previous Search.

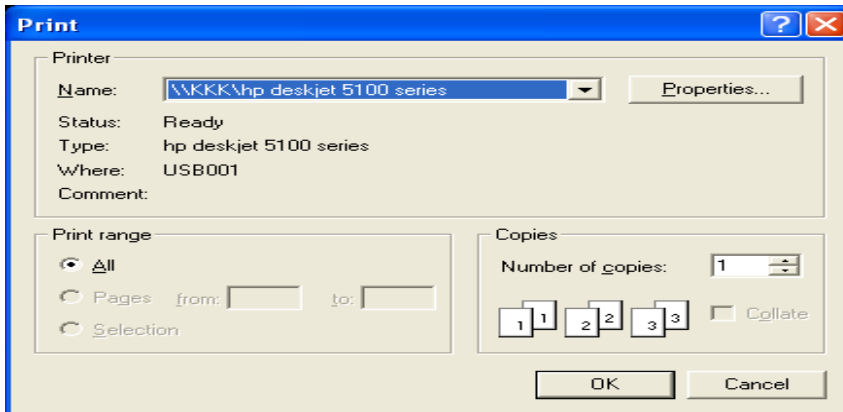
TIP: • Backup Player can be run independently without the Remote Agent Software.

- **Save Image** – Capture Image and save to local PC.



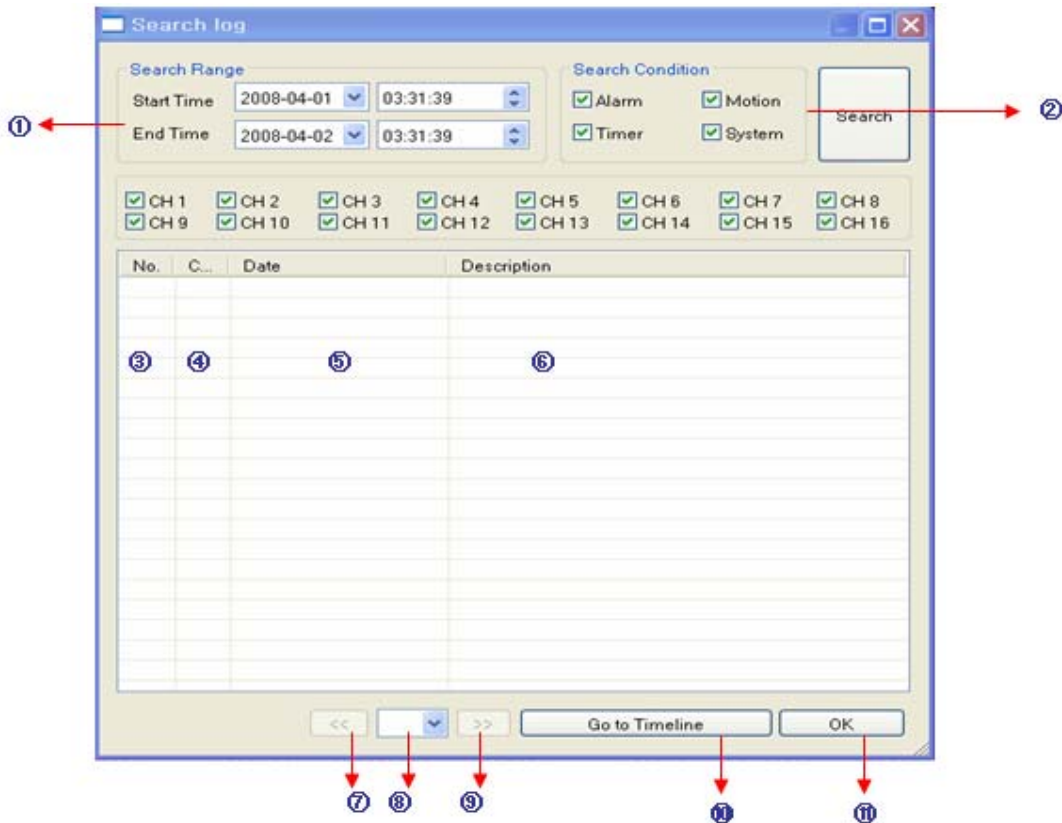
- Click 'Save Image' Icon During Playing Video.
- Designate File name, File Type (JPG, BMP), and Location and press Save.
- Conversion and Save Image from Remote Viewer.

- **Print Image** – Present Image Capture and Print Out Image



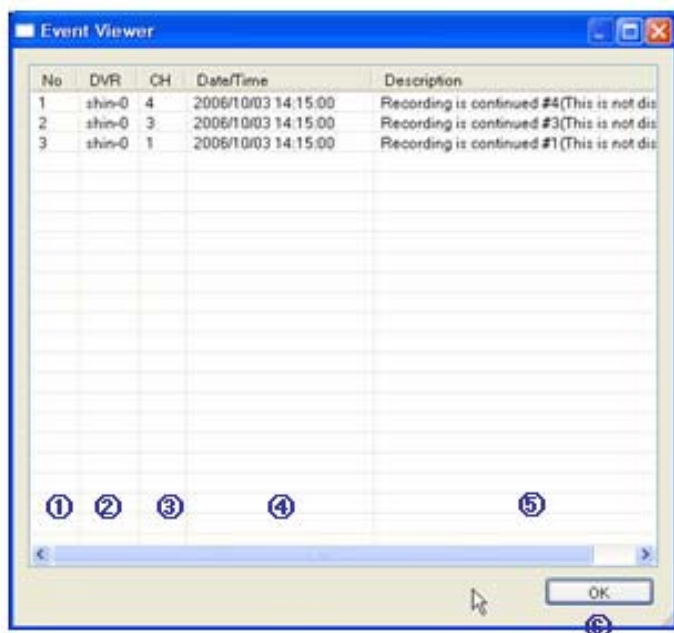
- During Play Video, click 'Print Image' .
- After selecting Printer, start Image Printing.
- Print out Remote Viewer Image.

- **Log Viewer** – Find Video from the DVR Event Log.



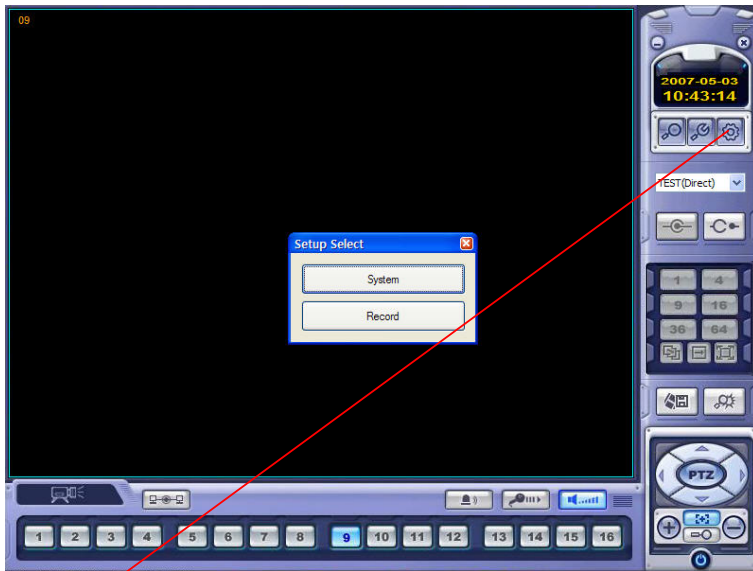
- ① Select Starting Date/Time and Ending Date/Time to search for Event Log events.
- Press Search Button to search and view search results.
- ② Choose the DVR to Search.
- ③ Indicates the order in which events in the Event Log occurred.
- ④ Indicates the Camera # on which the event occurred.
- ⑤ Indicates the Date/Time when the event occurred.
- ⑥ Description of the event.
- ⑦ Move to Previous Page of search results.
- ⑧ Move to Next Page of search results.
- ⑨ Select a page of search results to view.
- ⑩ Go to selected event on the search timeline.
- ⑪ Return to Search Window.


- **Event Viewer** - Show present event in server & find the image.



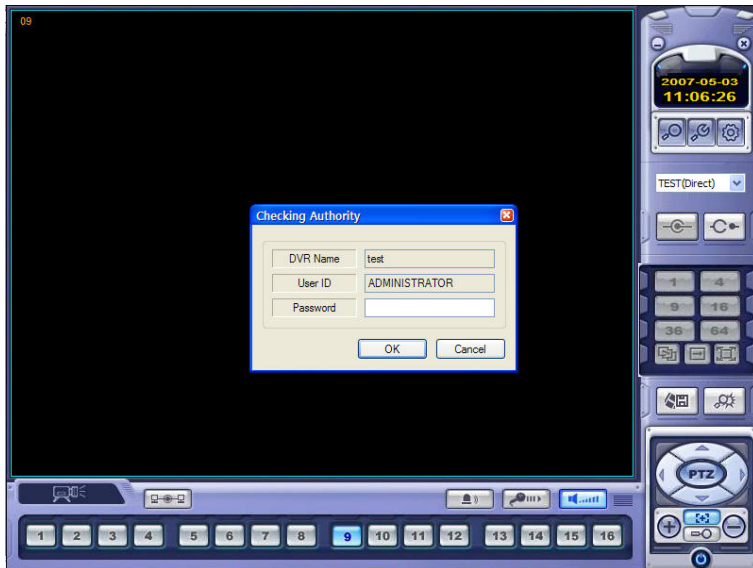
- ① Indicates the order in which events occurred.
- ② Indicates the DVR # on which an event occurred.
- ③ Indicates the Camera # on which an event occurred.
- ④ The Date/Time during which the event occurred.
- ⑤ Description of event.
- ⑥ Go to Selected Event on the Search Timeline.
- ⑦ Return to Search Window.

REMOTE SW DVR SYSTEM SETUP



Press  button and it shows left screen.

Select the System setup or Record setup.

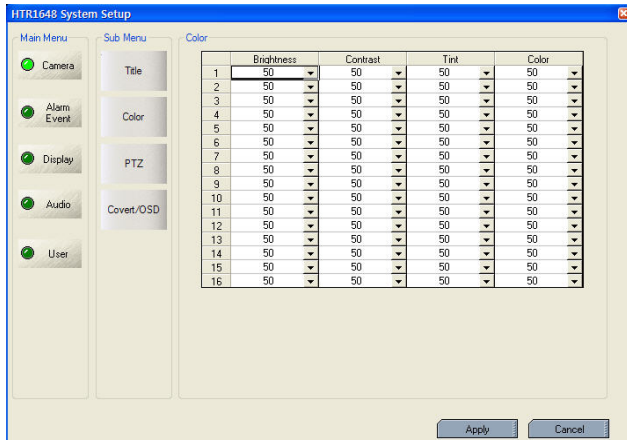
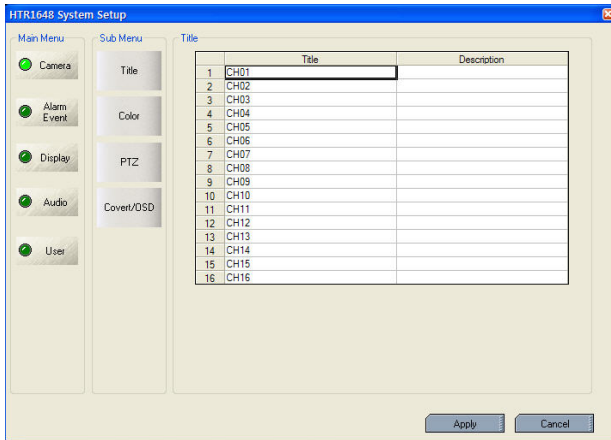


Click the "System" icon.

Input the Password. (Current default password is none.)

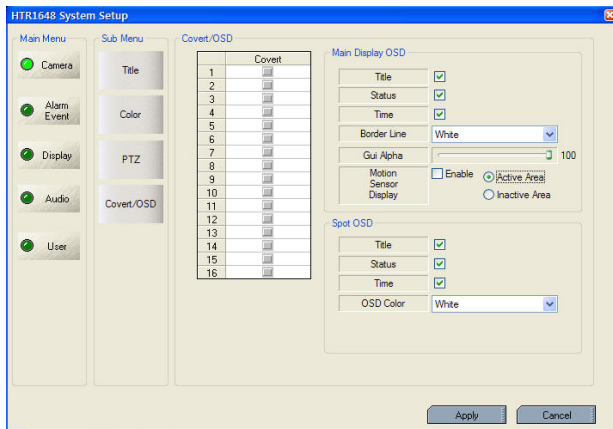
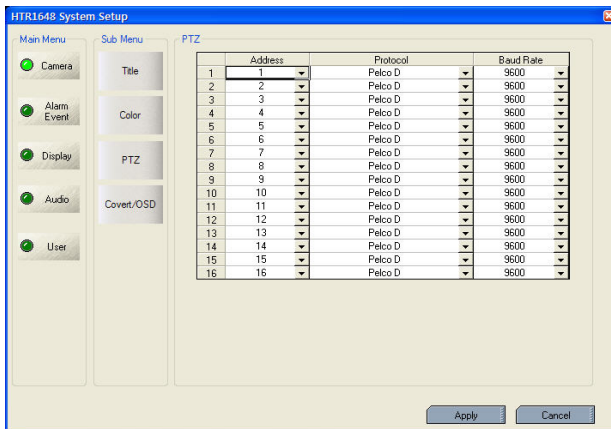
So click the "OK" without inputting the password)

Camera



Title: Input the name and description after selecting the channel with mouse.

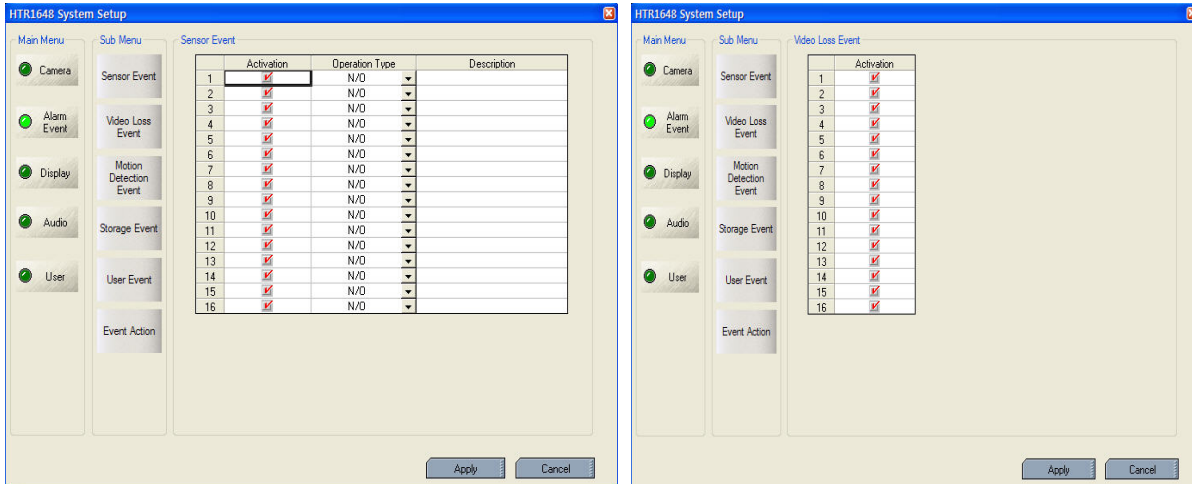
Color: Select the Brightness, Contrast, Tint, Color of each channel.



PTZ: Select the Address, Protocol, Baud Rate of each channel.

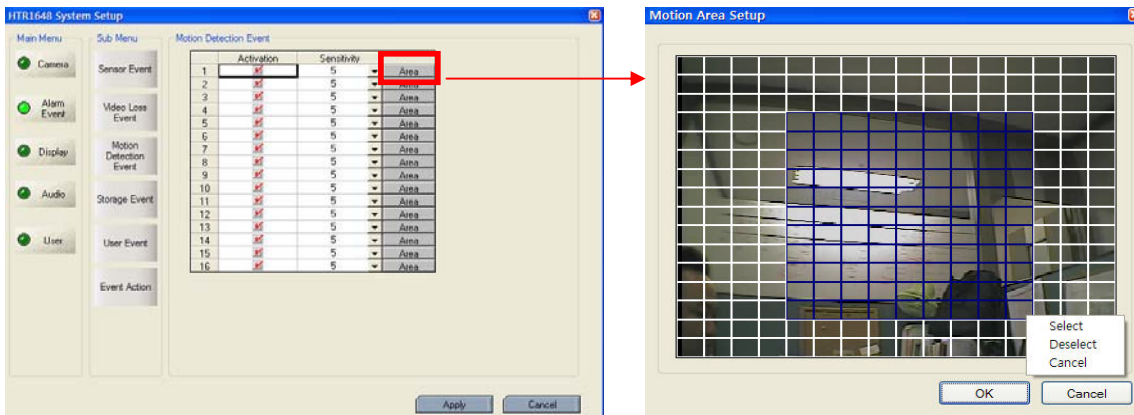
Covert/OSD: Select the Covert, Main Display and Spot OSD setup.

Alarm/Event



Sensor Event: Select the Activation, Active State (N/C, N/O-It is related with sensor type) and input the description.

Video Loss Event: Select the video loss Activation.

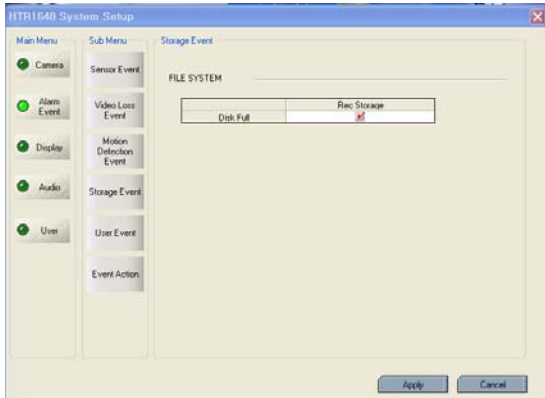


Motion Detection Event: Select the Motion Detection Activation, Sensitivity (1~10) and Motion Area.

Click the "AREA" icon and it will show the Motion Area Setup.

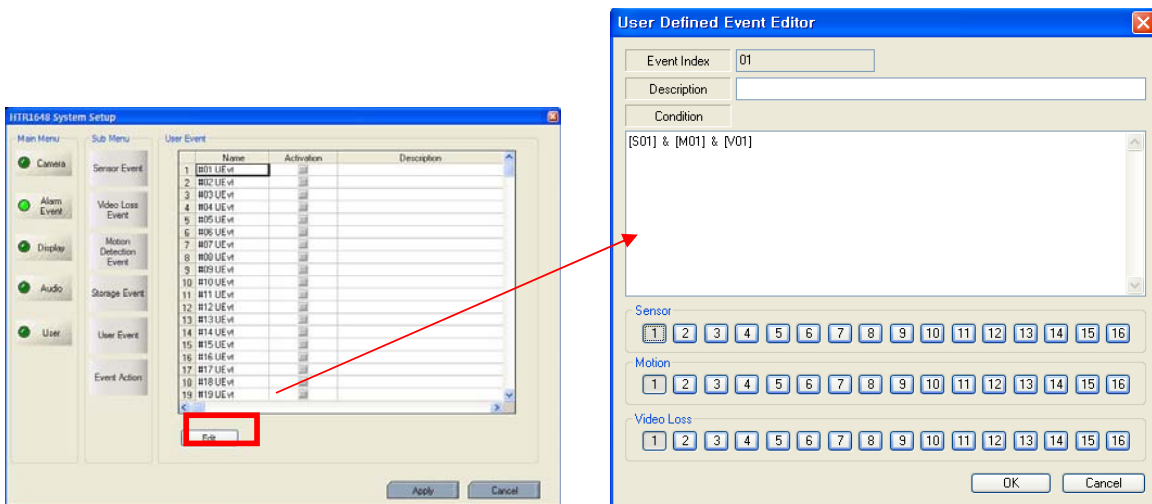
Select the motion area by dragging the mouse and choose one of the menu (select, deselect, cancel)

- Storage Event



Disk Full: When disk is full, on/off activation.

- User Event



Select the user event Activation

Click the "Edit" then it shows above screen.

The operator can make the User Defined Event with current event's mixing.

Two events could happen at the same time thus the operator could setup how it could work.

(Mixing condition is "AND" not "OR")

Setup the detail configuration after entering the "Editor" after clicking the "EDIT" button.

Select the Sensor, Motion, Video loss, Internal HDD, External HDD, and User Defined Event as user requires.

After selecting it, action type can setup from Event Action Setup.

- Event Action

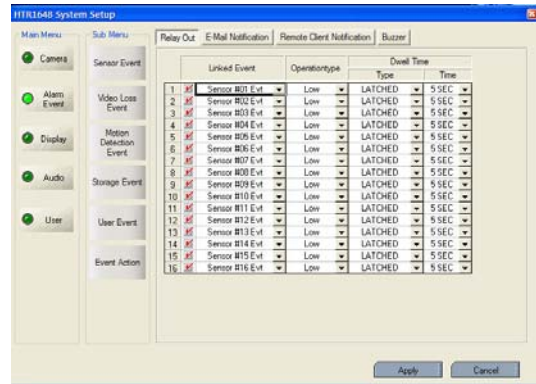
* Relay out

- Select the event to assign the action.
- Select the Activation on/off.
- Active state: Select the operation type (High / Low)
- Dwell: Select the type and action Time.

Transparent: It work from event's starting time to event ending time.

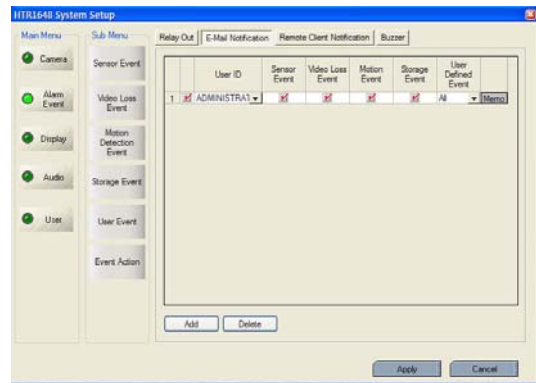
Latched: It work during selected period.

(1 ~300 second or until the time the key had been pressed)



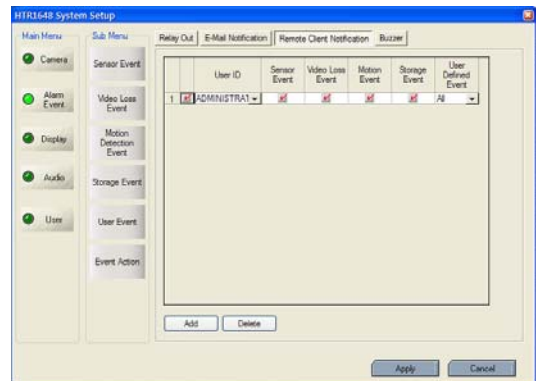
* E-mail notification

- Setup the User ID who requires receiving the each event.
- Press "ADD" button.
- After selecting added User ID, select each event (Sensor (Alarm), Video loss, Motion, Storage and User Defined Event) and then check the Activation on /off.
- Registered User can be deleted by pressing the "Delete" button.



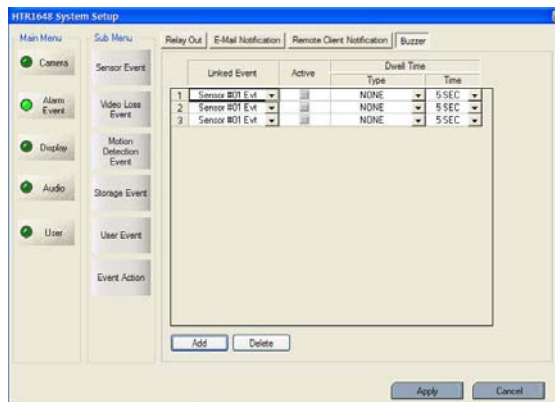
* Remote Client Notification

- When event happens on the selection, it notify the event to Remote client.
- Press "ADD" button.
- After selecting added user ID, select each event (Sensor (Alarm), Video loss, Motion, Storage and User Defined Event) and then check the Activation on /off.
- Registered User can be deleted by pressing the "Delete" button.



* Buzzer

- Select buzzer on/off for selected event. .
- After selecting the event (Alarm, motion, video loss, User Defined Event) that want to buzzer, select the activation on/off.
- Select the buzzer type (Latched, Transparent)



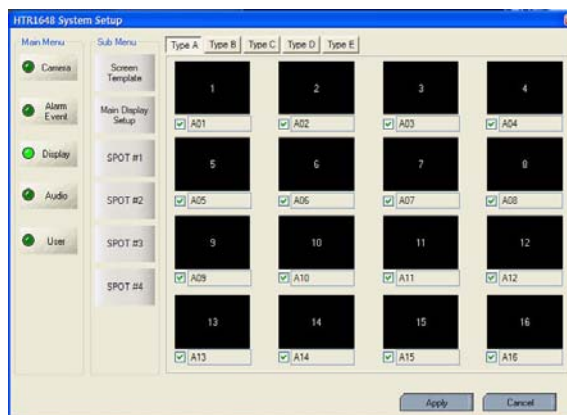
DISPLAY

- Screen Template

Select the screen division (typeA,B,C,D,E)

Double Click at the location which the operator requires to change.

- Then screen template is made or changed.
- The operator can make new screen template or modify the current screen template

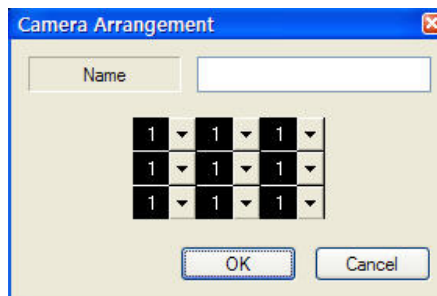


Double click the template that requires to be modified.

Input the name.

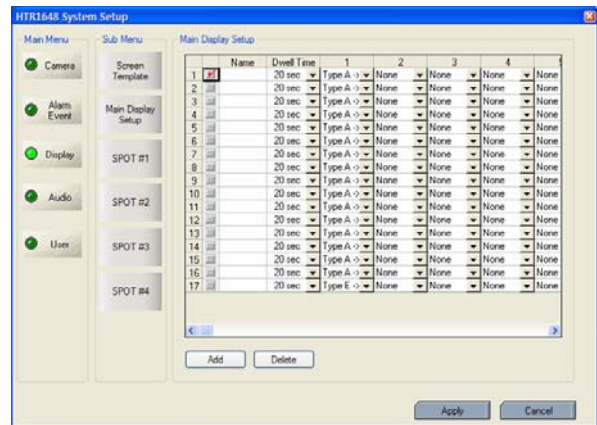
Select the channel from screen template.

Click the "OK."



- Main Display Setup

- Press the “ADD” button or select the current list.
- Select the name and dwell time.
- Select the new list.
- Select the screen template that requires to do the sequencing for each channel.
- The operator can add Max.16EA screen template by same method.
- Press the “DELETE” button after selecting the list and list would be deleted.
- The Max. list Number is 16EA.
- For selecting display, check the square.



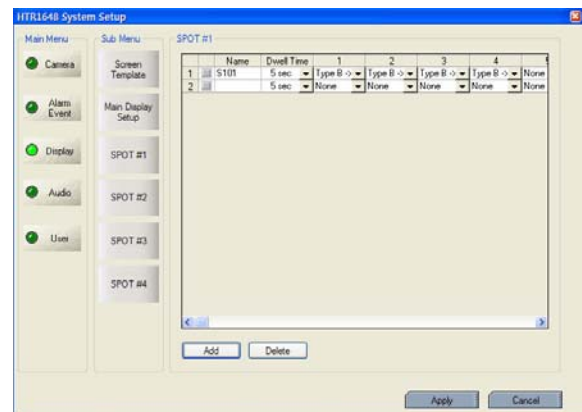
- Spot#1~4 Sequence

In case of advance spot, how to setup is almost the same as with main display sequence.

There is only one difference.

The screen template that can be selected is only two types (1,4 division).

- Press the “ADD” button or select the current list.
- Select the dwell time.
- Select the screen template which requires to do the sequence.
- The operator can add Max.16EA screen template by same method.
- Press the “Delete” button after selecting the list and the list would be deleted.



* The Max. list Number is 16EA for each spot channel.

- How to play and stop the sequence

After clicking mouse right button from live display, select the “SEQUENCE PLAY” or “SEQUENCE STOP”. Additionally, press the “SEQ” button from DVR.

AUDIO



- Live Audio

Select the Live audio channel.

- Network Audio

Select the audio transmitter and receiver

USER

- User group

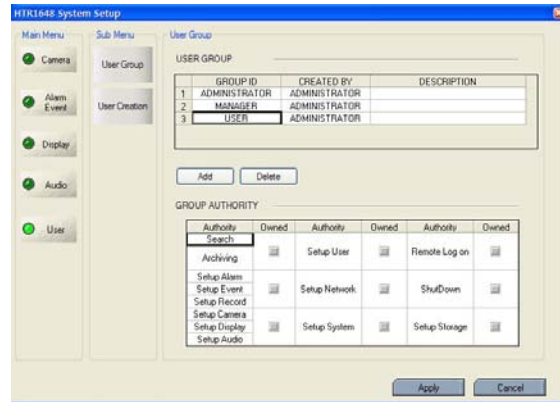
Default user group (ADMINISTRATOR, MANAGER, USER) can not be deleted.

After selecting “ADD” button, the operator can make the new user group with new authority.

From below section, the operator can select each authority.

After selecting the new group, check the authority that is required. Then click the “Apply” button.

How to edit is almost same as same with ADD after selecting the “EDIT” button.



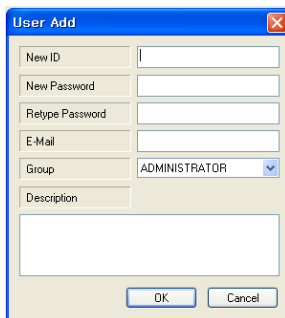
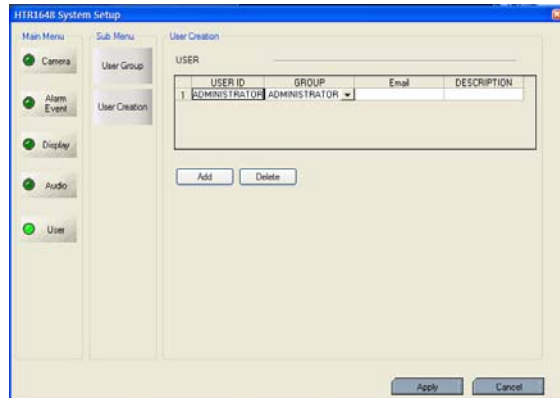
- User

The operator can add, delete or edit the new user.

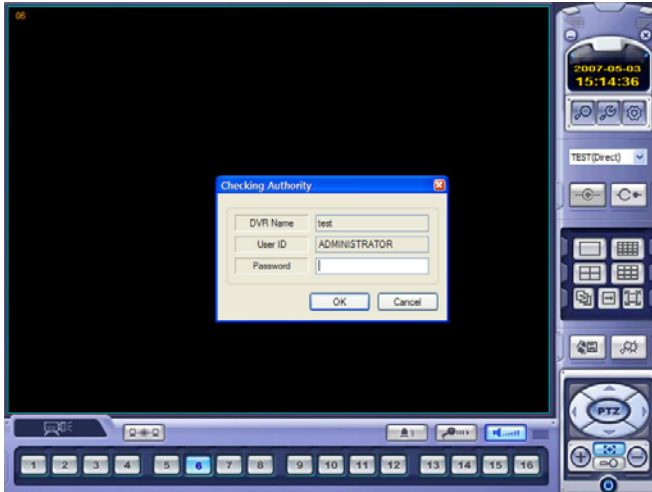
When selecting the “ADD” button, it shows “add user” screen.

After inputting the ID, PW, click the “OK”.

Then select the Group and input the E-mail address.



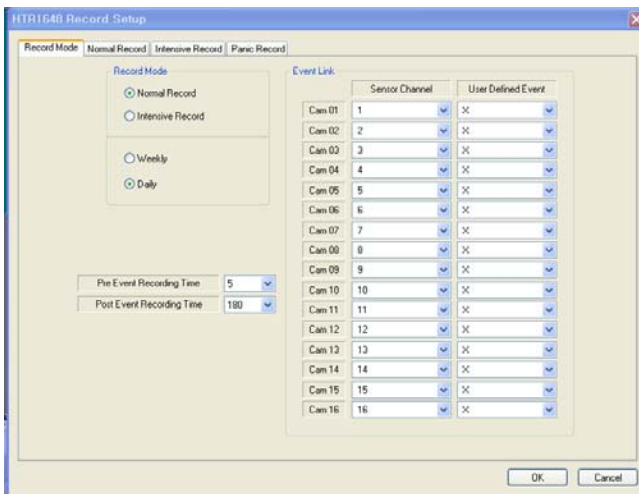
REMOTE SW DVR RECORD SETUP



Input the Password.

(Current default password is none. So click the "OK" without inputting the password)

Record Mode



- Select the "Record Mode" and "Weekly/Daily."

In case of selecting the "Normal Record" from record mode, the operator cannot enter "Intensive Record" setup.

Also, when the "Intensive Record" is selected, the operator cannot enter "Normal Record" setup.

- Weekly/Daily

The operator can select the 'Weekly' and 'Daily' record setup from 'Normal Record' and 'Intensive Record' setup.

So the DVR will record as daily and weekly setup configuration of "Normal and Intensive record" setup mode.

- Pre-Event Recording Time: When the DVR is not in continuous recording mode, this setting determines the amount of footage to be recorded before an event occurs.

(motion detection, alarm input etc.)

- Post- Event Recording Time : When the DVR is not in continuous recording mode, this setting determines the amount of footage that is to be recorded after an event occurs. (motion detection, alarm input etc.)

- Panic Recording: Disable: Disables the Panic recording function

Manual: It works by pressing the Panic button from Remote controller or Front panel

Press the Panic button again to stop the panic recording.

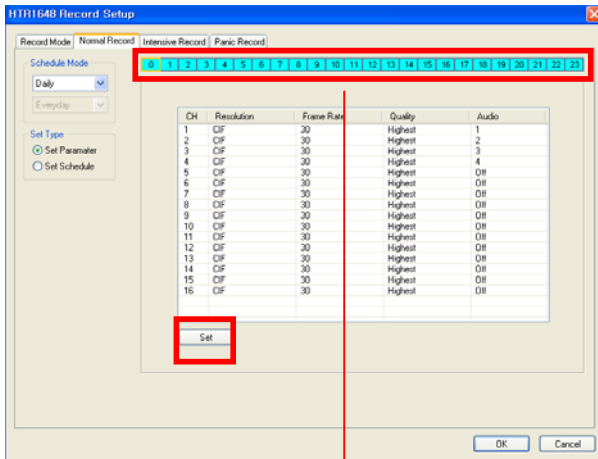
Auto: After starting the panic recording, it would be stopped automatically if assigned time is over.

- Panic Recording Time: It is related with "AUTO" option of Panic recording.

- Event Link: Select the sensor channel and user defined event for each channel.

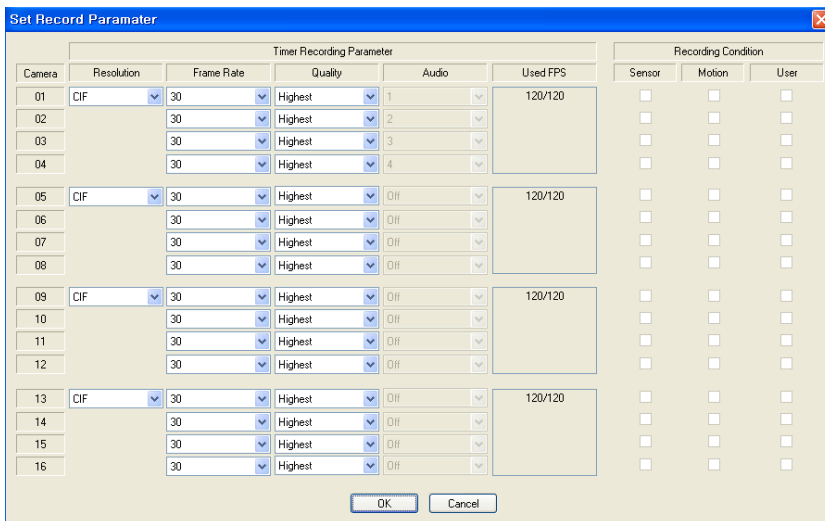
Normal Record

- Select the Daily/Weekly.
- Select the Parameter/Schedule



- Parameter

- Drag the time that requires being setup by mouse. Incase the setup is different for each time; the color would be indicated differently.

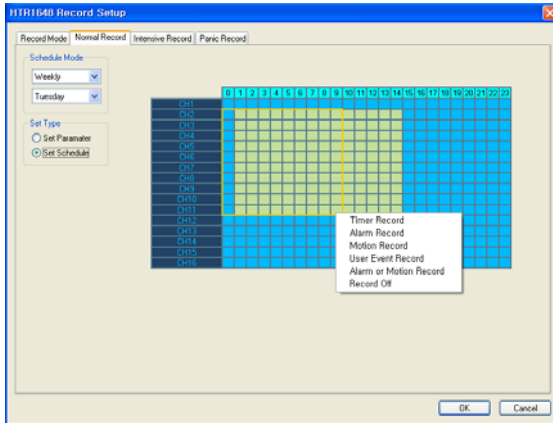


- Click the "SET" button. Then it shows above screen.
 - In case of recording setup, the operator should setup as 4 divided parts.
 - The operator can setup Max.CIF, 120FPS for each divided part.
- Select the Resolution.
- Select the Frame Rate
- Select the Quality. (Low, standard, high, highest)
- The operator can setup other divided part as same method.
- In case of Audio setup, it is assigned at Nr.1, 2, 3, 4 Channel basically.
 - (It can not be changed)

In case of weekly, it is almost same with daily setup.

It can setup each date.

- Schedule



The operator can select recording type (Timer, Motion, Alarm, User Defined, Alarm or Motion and Record off) each time, channel.

Drag the section that requires to be selected and then click the mouse right button.

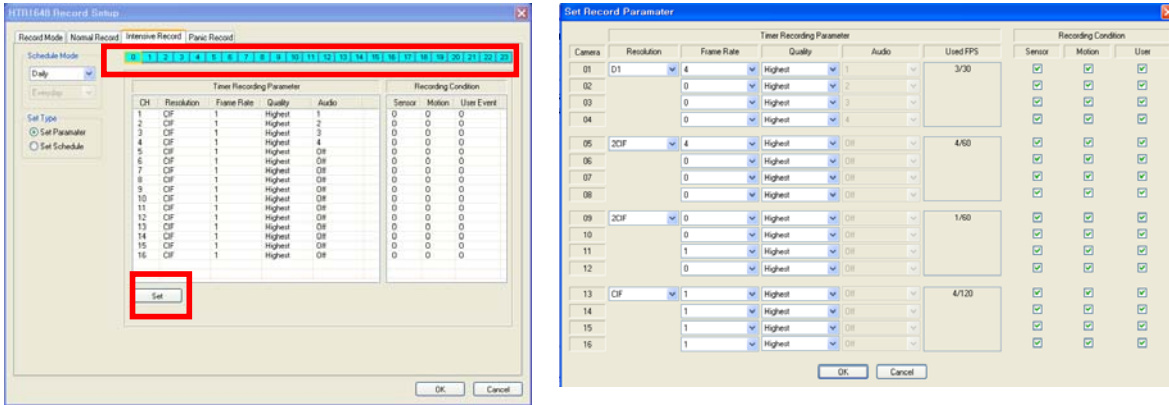
Then recording option will appeared. The operator can select the recording option for each time and channel.

Intensive Record

In case of Intensive record, it will be centralized at channel which event is arising as event priority.

- Parameter

Drag the time that requires being setup by mouse. In case the setup is different for each time; the color would be indicated differently.



The setup is same with normal recording setup.

It record as setup under normal condition. But when the event arises on channel, the channel with event setup would record as D1, 30 FPS automatically.

In case the event happens at several channel at one time, it would share the max. recording rate appropriately.

In case of recording setup, the operator should setup as 4 divided parts.

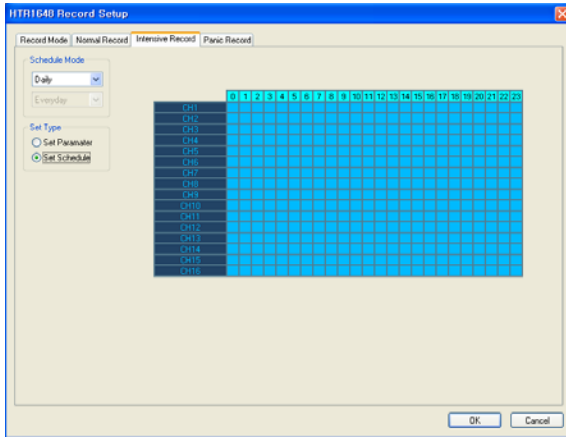
The operator can setup Max.CIF, 120FPS for each divided part.

- Select the Resolution.
- Select the Frame Rate
- Select the Quality. (Low, standard, high, highest)
- The operator can setup other divided part by same method.
- In case of Audio setup, it is assigned at Nr.1,2,3,4 Channel basically.
(It cannot be changed)

Select the Intensive recording condition with Alarm, Motion and User defined event.

In case of weekly, it is almost the same setup as daily setup. It can setup each date.

- Schedule



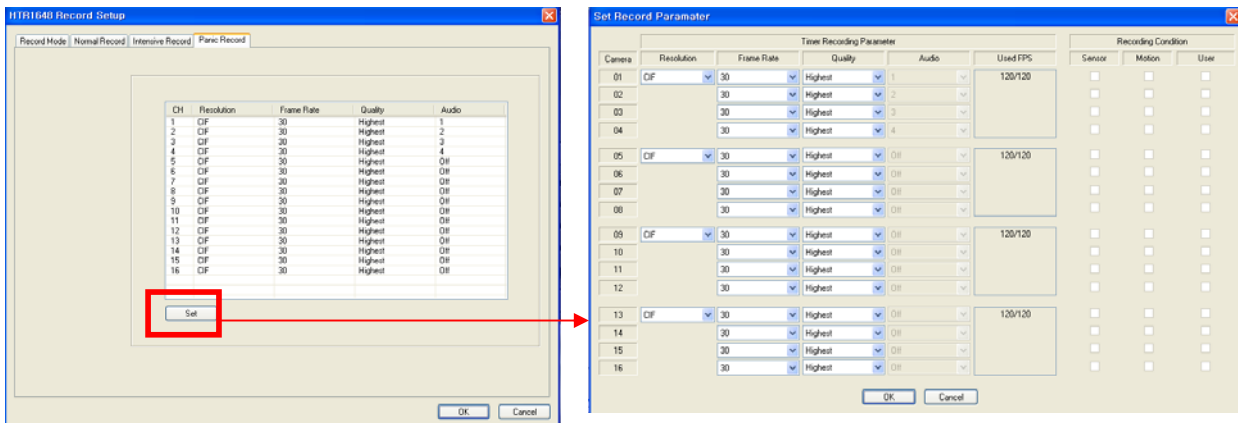
The operator can select the record on/ off each time and channel.

Drag the desired section for selection and click the mouse right button.

Then, recording option will appear. The operator can select the recording on/off each time and channel.

Panic Record

When the panic button is pressed or the panic alarm is detected, recording condition is changed as panic record setup.



In case of recording setup, the operator should setup as 4 divided parts.

The default setup is CIF, 30FPS.

Setup method is same with normal record setup.

The operator can setup Max.CIF, 120FPS for each divided part.

- Select the Resolution.
- Select the Frame Rate
- Select the Quality. (Low, standard, high, highest)
- The operator can setup other divided part as same method.
- In case of Audio setup, it is assigned at Nr.1, 2, 3, 4 Channel basically. (It cannot be changed)

WEB Client INSTALLATION

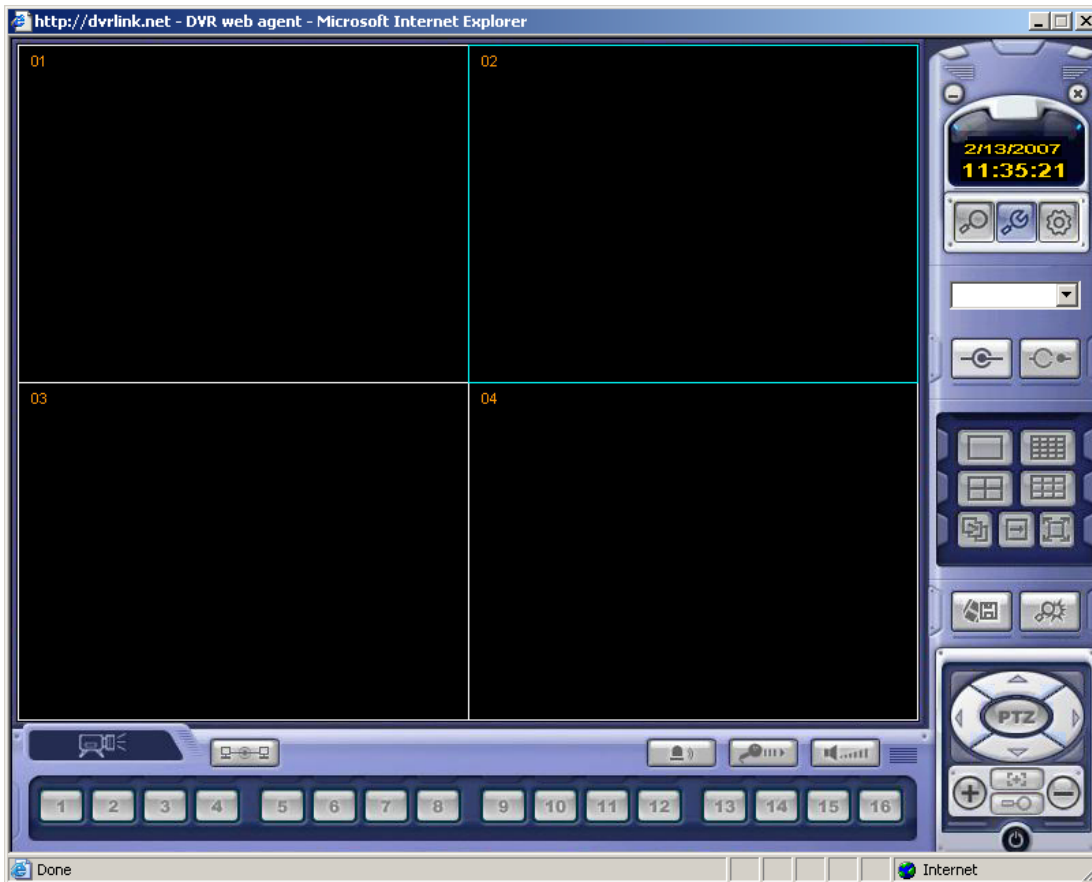
WEB Client Connection

Input the IP Address or URL of the DVR in the Internet Explorer Address Bar.

If when user use the DDNS, input the URL with default port number (8080) like below.

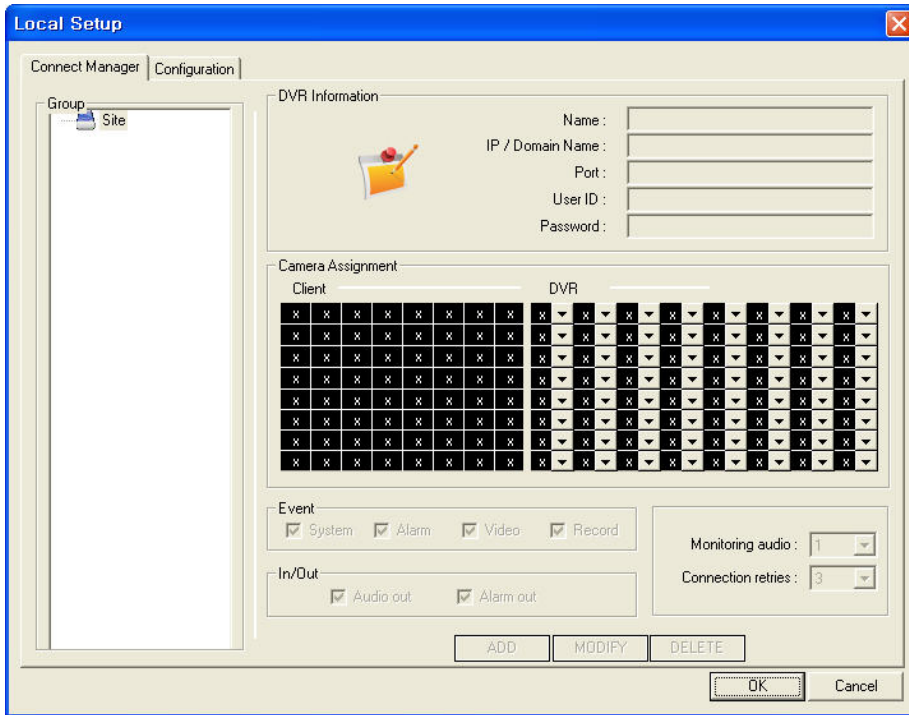
<http://macaddress.dvrlink.net:8080>

Then a dialog will appear to confirm download of an ActiveX control. Please click 'Confirm' or 'Continue'.

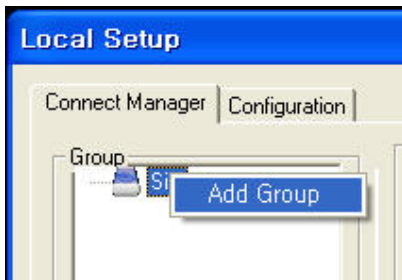


Then click the SETUP button

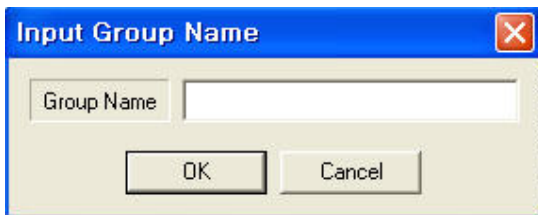




Click the right button of mouse on the Site in Group and click the Add Group menu like below.



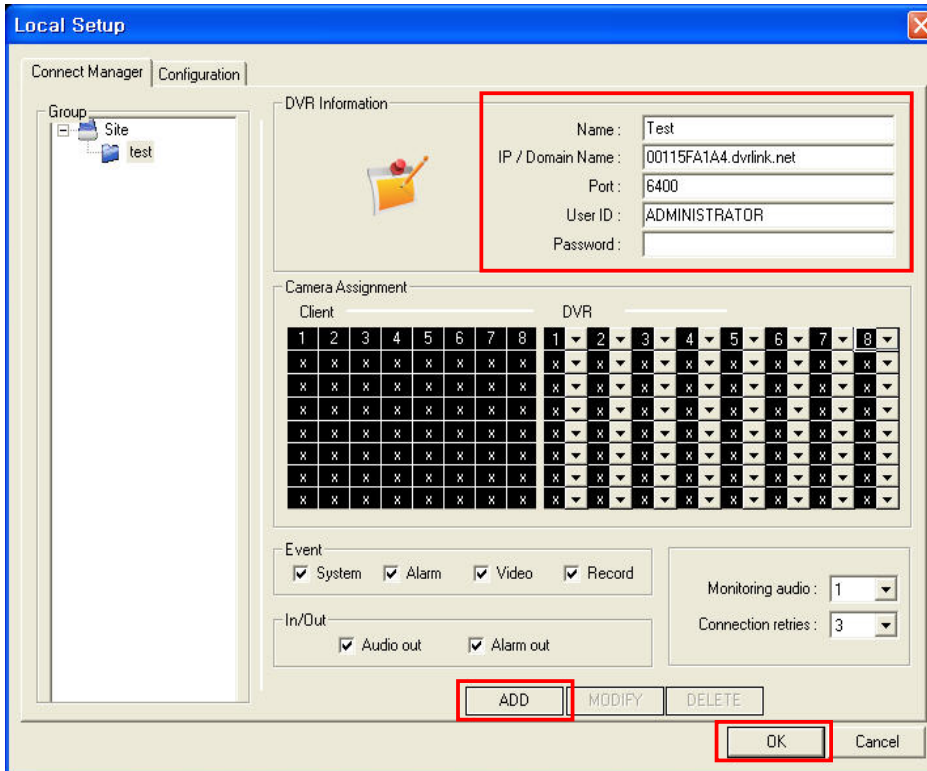
Input the Group Name.



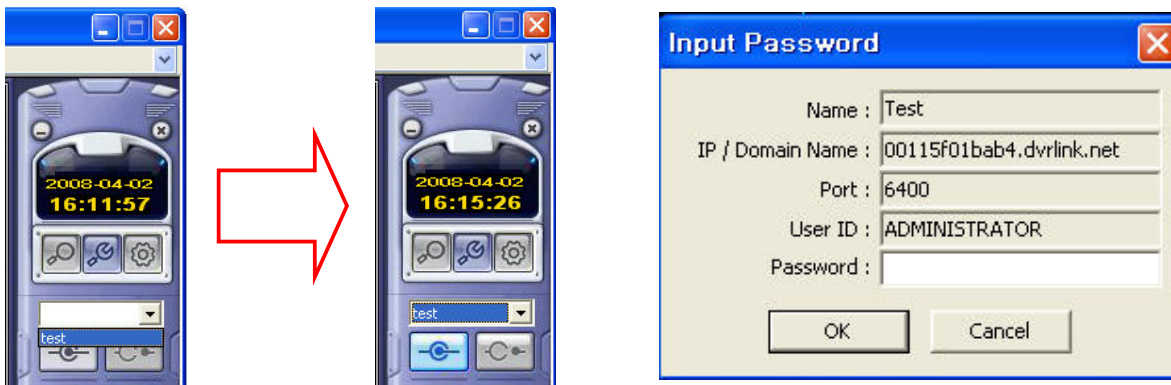
Click the Grout name and input the DVR information.

* Input the default Port and User ID correctly. (6400, ADMINISTRATOR with NO PASSWORD)

Then click the ADD button and OK button.



Select the site name and click the connection button then input the password. (Default : No password)



If the DVR information is correct, can see the connected screen like below.





Français/French

Élimination de votre ancien appareil

1. Ce symbole, représentant une poubelle sur roulettes barrée d'une croix, signifie que le produit est couvert par la directive européenne 2002/96/EC.
2. Tous les produits électriques et électroniques doivent être éliminés séparément de la chaîne de collecte municipale des ordures, par l'intermédiaire des installations de collecte prescrites et désignées par le gouvernement ou les autorités locales.
3. Une élimination conforme aux instructions aidera à réduire les conséquences négatives et risques éventuels pour l'environnement et la santé humaine.
4. Pour plus d'informations concernant l'élimination de votre ancien appareil, veuillez contacter votre mairie, le service des ordures ménagères ou encore le magasin où vous avez acheté ce produit.

English

Disposal of your old appliance

1. When this crossed-out wheeled bin symbol is attached to a product it means the product is covered by the European Directive 2002/96/EC.
2. All electrical and electronic products should be disposed of separately from the municipal waste stream via designated collection facilities appointed by the government or the local authorities.
3. The correct disposal of your old appliance will help prevent potential negative consequences for the environment and human health.
4. For more detailed information about disposal of your old appliance, please contact your city office, waste disposal service or the shop where you purchased the product.

Deutsch/German

Entsorgung von Altgeräten

1. Wenn dieses Symbol eines durchgestrichenen Abfalleimers auf einem Produkt angebracht ist, unterliegt dieses Produkt der europäischen Richtlinie 2002/96/EC.
2. Alle Elektro- und Elektronik-Altgeräte müssen getrennt vom Hausmüll über die dafür staatlich vorgesehenen Stellen entsorgt werden.
3. Mit der ordnungsgemäßen Entsorgung des alten Geräts vermeiden Sie Umweltschäden und eine Gefährdung der persönlichen Gesundheit.
4. Weitere Informationen zur Entsorgung des alten Geräts erhalten Sie bei der Stadtverwaltung, beim Entsorgungsamt oder in dem Geschäft, wo Sie das Produkt erworben haben.

Italiano/Italian

RAEE: SMALTIMENTO DELLE VOSTRE VECCHIE APPARECCHIATURE

1. Quando il simbolo del "Cassonetto Barrato" è apposto su un prodotto, significa che lo stesso può ricadere nei termini previsti dalla Direttiva Europea nr. 2002/96/EC in funzione dell'attuazione definita dalla Legislazione dei singoli stati membri dell'Unione Europea.
2. Tutti i prodotti elettrici ed elettronici dovrebbero essere smaltiti separatamente dai rifiuti municipali, tramite appositi contenitori, approvati dall'Amministrazione Comunale o dalle Autorità Locali.
3. Il corretto smaltimento delle vostre vecchie apparecchiature, contribuirà a prevenire possibili conseguenze di impatto negativo sull'ambiente e per la salute dell'uomo.
4. Per maggiori informazioni circa lo smaltimento delle vostre vecchie apparecchiature, siete pregati di contattare l'ufficio municipale della vostra città, il servizio di smaltimento rifiuti o il punto vendita nel quale avete acquistato il prodotto.

Polski/Polish

Utylizacja starych urządzeń

1. Kiedy do produktu dołączony jest niniejszy przekreślony symbol kołowego pojemnika na śmieci, oznacza to, że produkt jest objęty europejską dyrektywą 2002/96/EC.
2. Wszystkie elektryczne i elektroniczne produkty powinny być utylizowane niezależnie od odpadów miejskich, z wykorzystaniem przeznaczonych do tego miejsc składowania wskazanych przez rząd lub miejscowe władze.
3. Właściwy sposób utylizacji starego urządzenia pomoże zapobiec potencjalnie negatywnemu wpływowi na zdrowie i środowisko.
4. Aby uzyskać więcej informacji o sposobach utylizacji starych urządzeń, należy skontaktować się z władzami lokalnymi, przedsiębiorstwem zajmującym się utylizacją odpadów lub sklepem, w którym produkt został kupiony.

Português/Portuguese

Eliminação do seu antigo aparelho

1. Quando este símbolo de latão cruzado estiver afixado a um produto, significa que o produto é abrangido pela Directiva Europeia 2002/96/EC.
2. Todos os produtos eléctricos e electrónicos devem ser eliminados separadamente da coleta de lixo municipal através de pontos de recolha designados, facilitados pelo governo ou autoridades locais.
3. A eliminação correcta do seu aparelho antigo ajuda a evitar potenciais consequências negativas para o ambiente e para a saúde humana.
4. Para obter informações mais detalhadas acerca da eliminação do seu aparelho antigo, contacte as autoridades locais, um serviço de eliminação de resíduos ou a loja onde comprou o produto.

Español/Spanish

Cómo deshacerse de aparatos eléctricos y electrónicos viejos

1. Si en un producto aparece el símbolo de un contenedor de basura tachado, significa que éste se acoge a la Directiva 2002/96/EC.
2. Todos los aparatos eléctricos o electrónicos se deben desechar de forma distinta del servicio municipal de recogida de basura, a través de puntos de recogida designados por el gobierno o las autoridades locales.
3. La correcta recogida y tratamiento de los dispositivos inservibles contribuye a evitar riesgos potenciales para el medio ambiente y la salud pública.
4. Para obtener más información sobre cómo deshacerse de sus aparatos eléctricos y electrónicos viejos, póngase en contacto con su ayuntamiento, el servicio de recogida de basuras o el establecimiento donde adquirió el producto.

AMERICA

CBC (AMERICA) CORP.
New York / California
<http://www.cbcamerica.com>

EUROPE

CBC (EUROPE) LTD.
London
<http://www.cbceurope.com>

CBC (EUROPE) LTD.
Milan
<http://www.cbceurope.it/cctv>
info@cbc-europe.it

CBC (DEUTSCHLAND) GmbH
Dusseldorf
<http://www.cbc-de.com>

CBC (POLAND) Sp.zo.o
Warszawa
<http://www.cbcpoland.pl>

CBC Co., Ltd. MOSCOW REP OFFICE
Moscow
<http://www.cbc.ru>

CHINA

CBC(Beijing) Trading CO.,LTD.
Beijing
<http://www.cbc-china.cn/10/>

CBC (SHANGHAI) TRADING CO., LTD.
Shanghai
<http://www.cbc-china.cn/10/>

CBC SHANGHAI CO., LTD. GUANGZHOU OFFICE
Guangzhou
<http://www.cbc-china.cn/10/>

CBC (H.K.) CO., LTD.
Hong Kong
<http://www.cbc-china.cn/10/>

ASIA

CBC. S PTE LTD.
Singapore

CBC(THAILAND) CO., LTD.
Bangkok

CBC CO., LTD. MUMBAI REP OFFICE
Mumbai

CBC CO., LTD. JAKARTA REP OFFICE
Jakarta

CBC (TAIWAN) CO., LTD.
Taipei
<http://www.computar.com.tw/>

CBC Co. Middle East Branch Office
Dubai
<http://www.cbceurope.com>



CBC Co.,Ltd.
www.GANZ.jp